

الهيئة العامة للإحصاء

للفترة

2001 – 2000

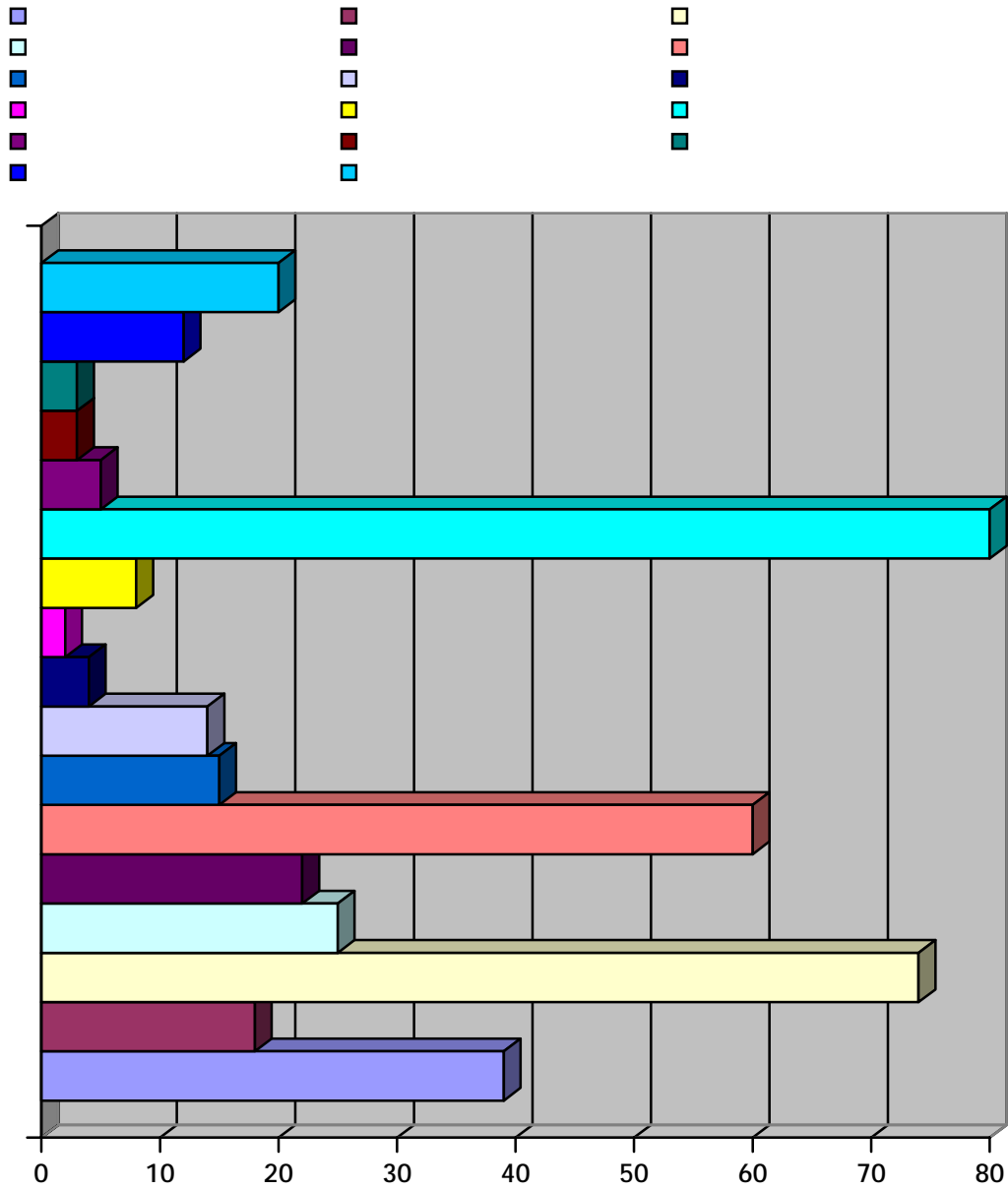
قسم المراقب العامة والإعلام

وحدة الإحصاء

المحتويات

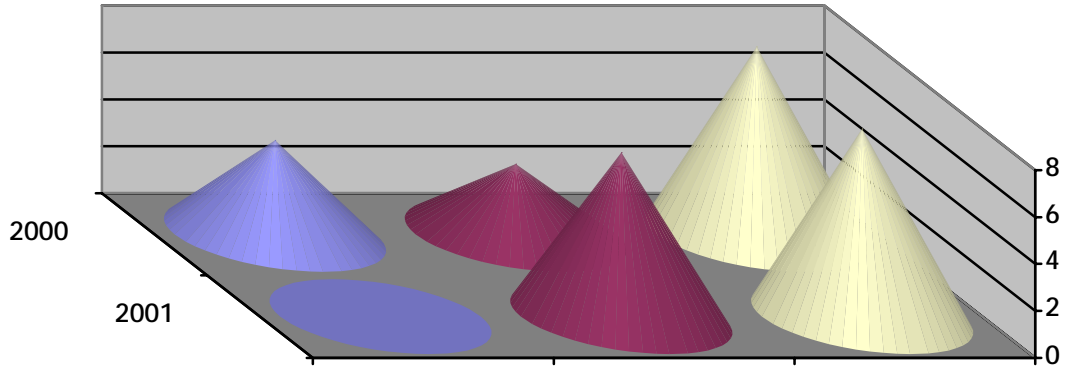
الصفحة	الإدارة / القسم
1	1. <u>إدارة تكنولوجيا المعلومات:</u>
6	2. <u>إدارة الشؤون الفنية:</u>
	:1-2
	:2-2
	:3-2
	:4-2
	:5-2
15	3. <u>إدارة المخازن:</u>
16	4. <u>الأقسام الأخرى:</u>
16	:1-4
19	:2-4
20	:3-4
22	:4-4
26	:5-4
30	:6-4
34	:7-4
36	:8-4
41	:9-4
44	:10-4
48	:11-4
53	:12-4
54	5. <u>فروع بلدية الشارقة:</u>
54	:1-5
56	:2-5
59	:3-5
61	:4-5

عدد المستخدمين	التسلسل
39	1
18	2
74	3
25	4 ()
22	5
60	6
15	7
14	8
4	9 ()
2	10
8	11
80	12
5	13
3	14 ()
3	15
12	16
20	17
404	



:

2001	2000	
0	4	
8	8	
7	3	



(VLAN's)

70

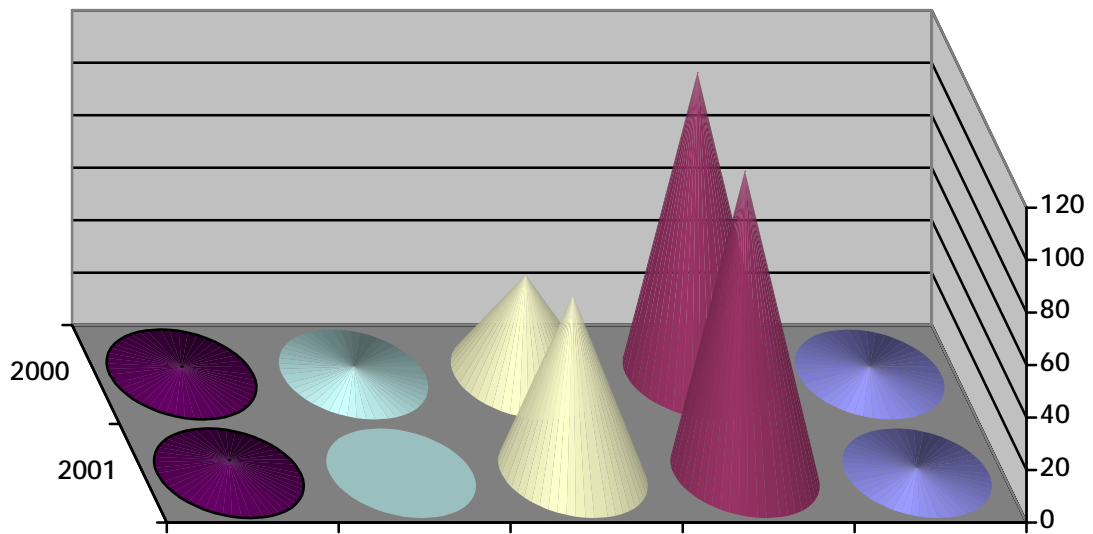
.(Category 6)

(Cisco)

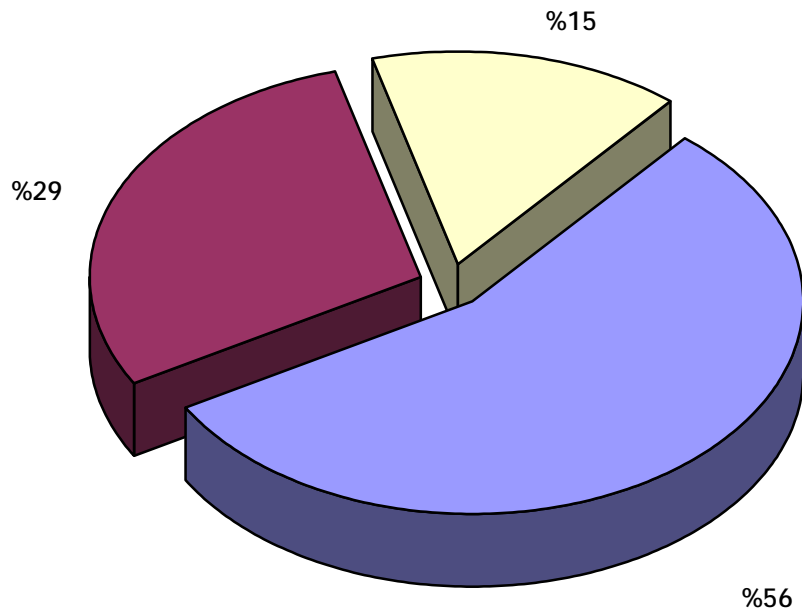
(Frame Relay)

(Frame Relay)

2001	2000	
2	3	(Server)
115	115	(Pc.)
68	38	(Printer)
0	3	(Plotter)
5	3	(Scanner)



/ /	
489,409	(52415)
255,125	
135,000	()
879,534	



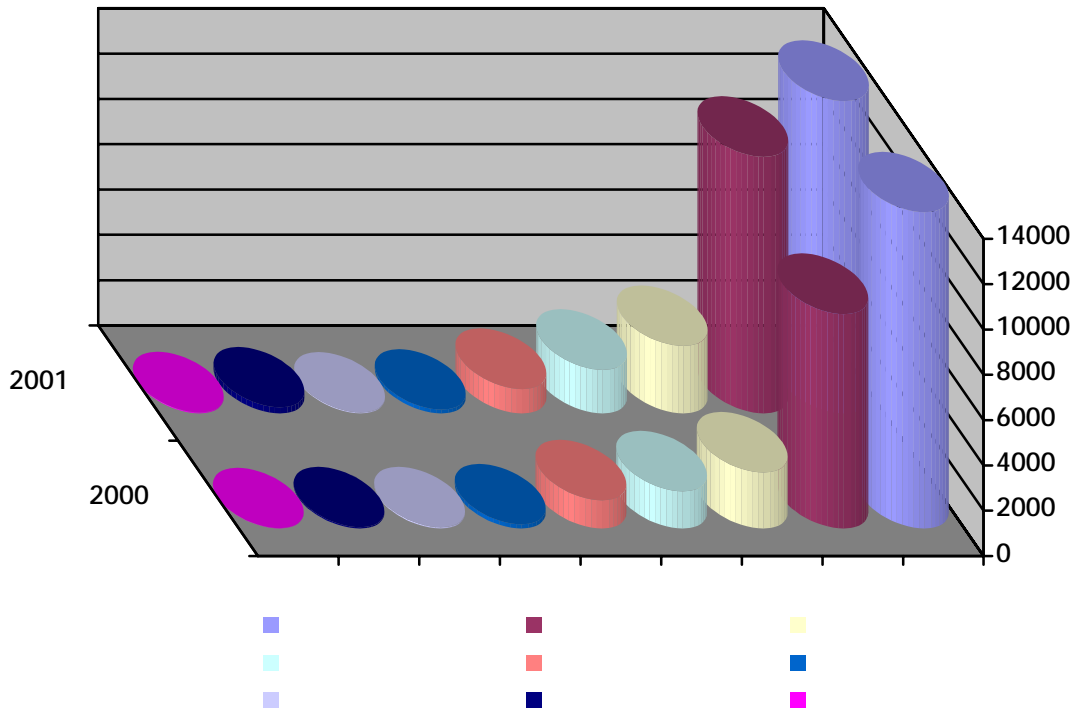
1996

2000

() 2001

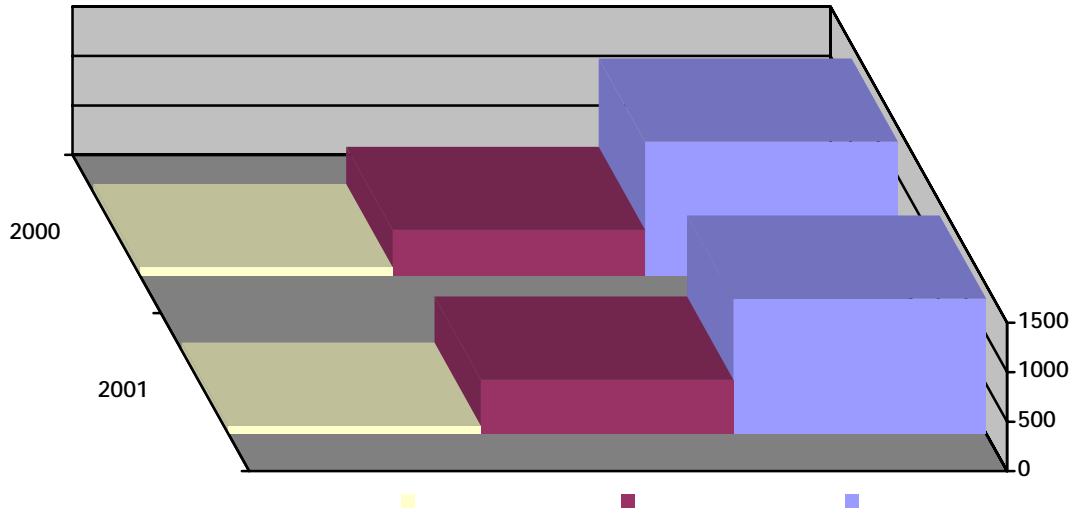
_____ :

2001	2000	
13791	13966	
160	183	
37	57	
11332	9474	
2973	2475	
262	57	
1073	1248	
1921	1648	
43	13	
31592	29121	



2001				2000				
390	6	84	300	287	1	9	277	
12	0	2	11	18	0	3	15	
1271	62	384	821	1065	60	342	663	
208	11	38	158	305	16	24	265	
18	1	13	4	17	0	6	11	
24	0	10	15	23	2	7	14	
34	0	4	30	15	0	0	15	
3	0	3	0	2	0	0	2	
3	0	1	2	13	2	4	7	
2	0	0	2	6	0	1	5	
25	0	6	19	149	5	66	78	
1990	80	545	1362	1900	86	462	1352	

(*)



_____ :

2001

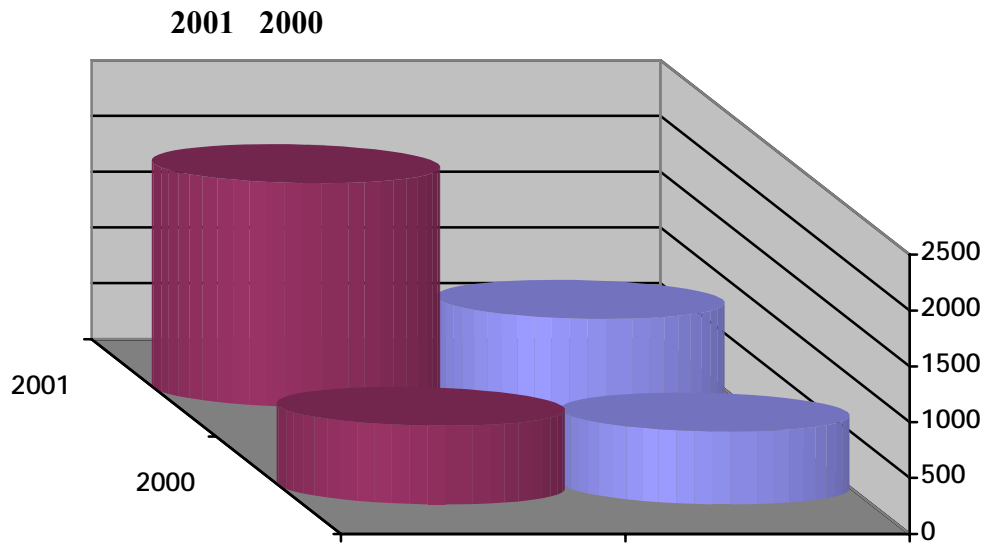
	115773	
	130334	
	128180	
	69850	
	10657	
	1522	
	311	
	524	

2001

	144
	964
	929
	415
	202

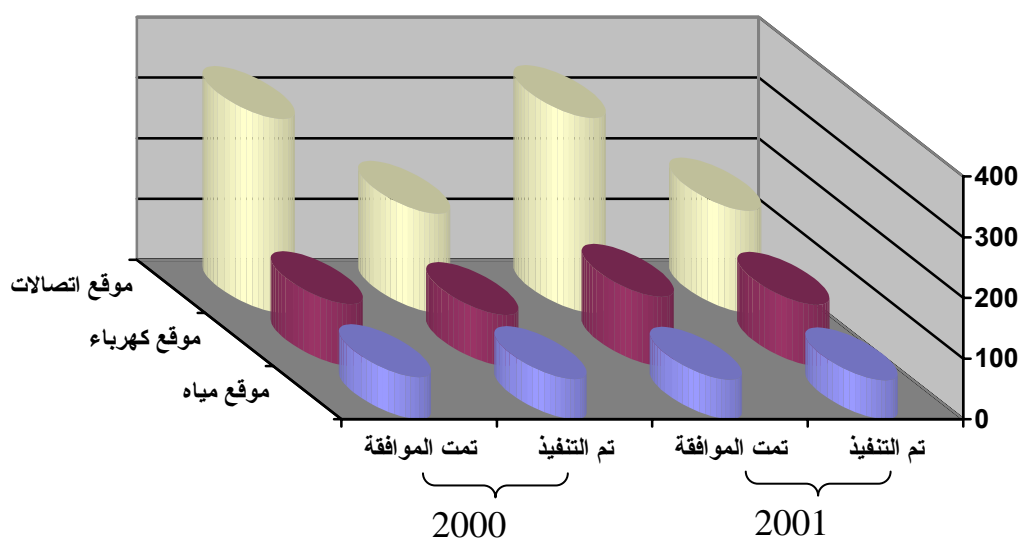
_____ :

2001		2000	
790		655	
2007		706	
1,200,497		1,365,102	

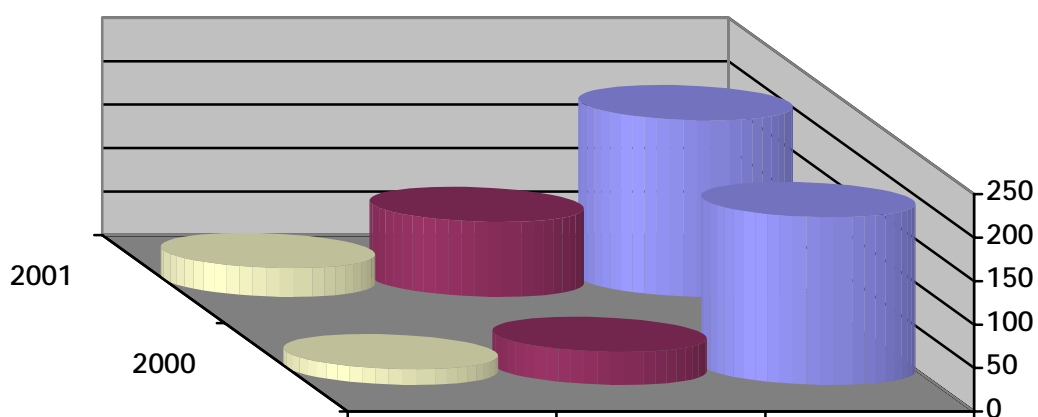


()

2001		2000	
168	321	163	319
101	114	84	102
64	65	66	69



2001	2000
33	18
86	38
203	193



1992

:

-
-
-
-

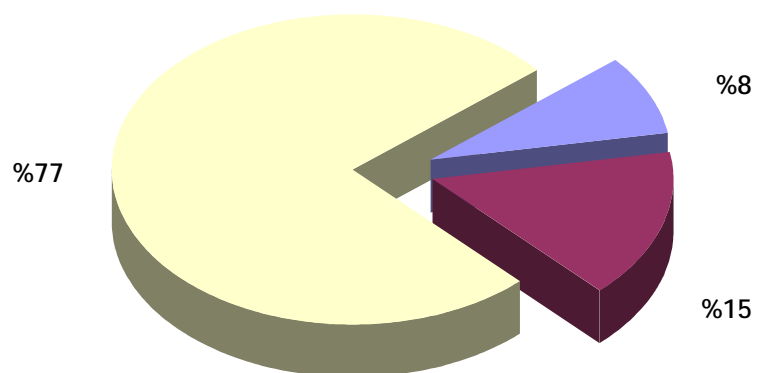
2000

2380	238	900	1242	
7725	660	530	6535	
208	2	113	93	
799	51	0	748	
210	0	210	0	/
138	0	21	117	
11460	951	1774	8735	

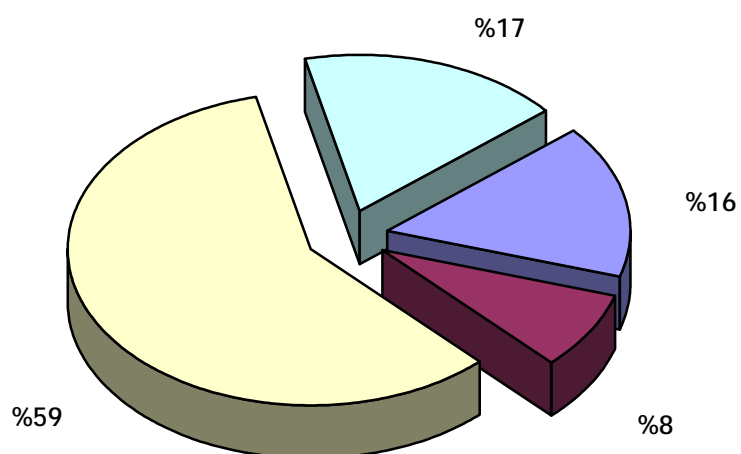
2001

7134	1046	22	3565	2501
15451	3020	322	11635	474
3328	62	2015	731	520
1053	249	0	767	37
1867	0	5	351	1511
447	274	2	126	45
29280	4651	2366	17175	5088

2000

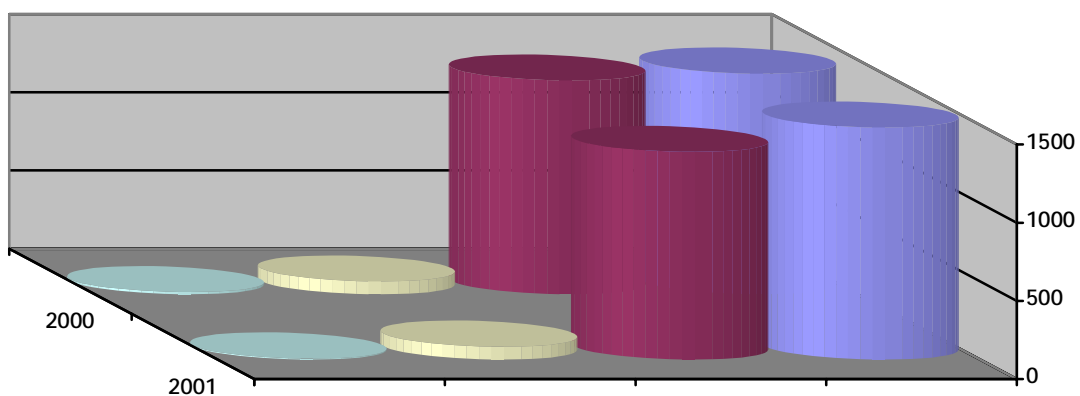


2001



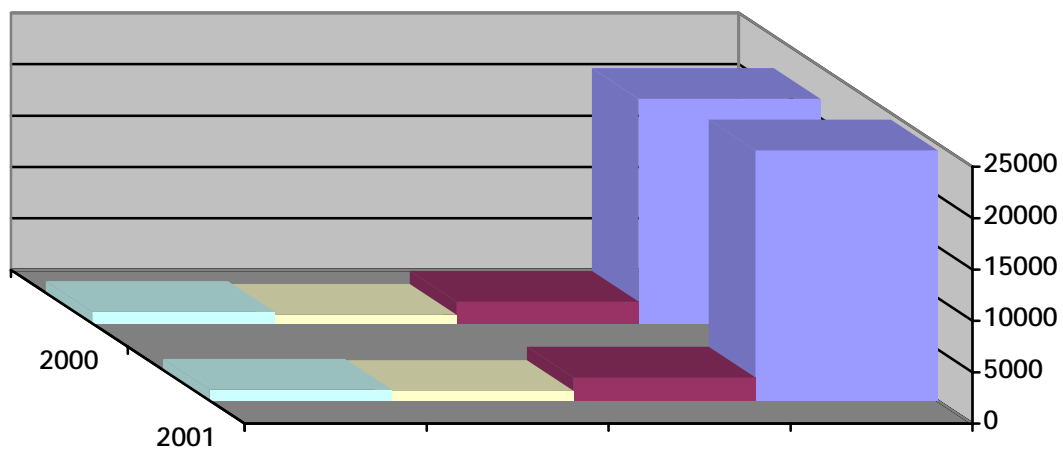
: _____ :

2001	2000	
82	82	
6	14	
1328	1368	
1484	1412	



2001	2000	
24370	21884	
2257	2131	
927	869	
1046	1148	

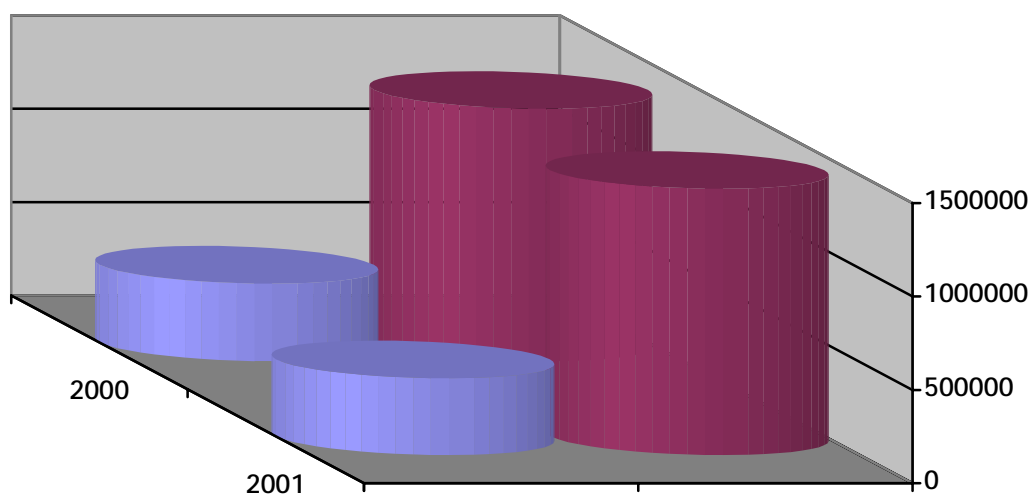
2001 2000



2001 2000

2001	2000	
412113	416039	
1426203	1353121	

2001 2000



6	()	2000
4		
4	()	
1	()	
6	()	2001
4		
8	()	
2	()	
1		
2		
3		
2	()	
2		
8		

2001

:

.1

.2

.3

.4

()

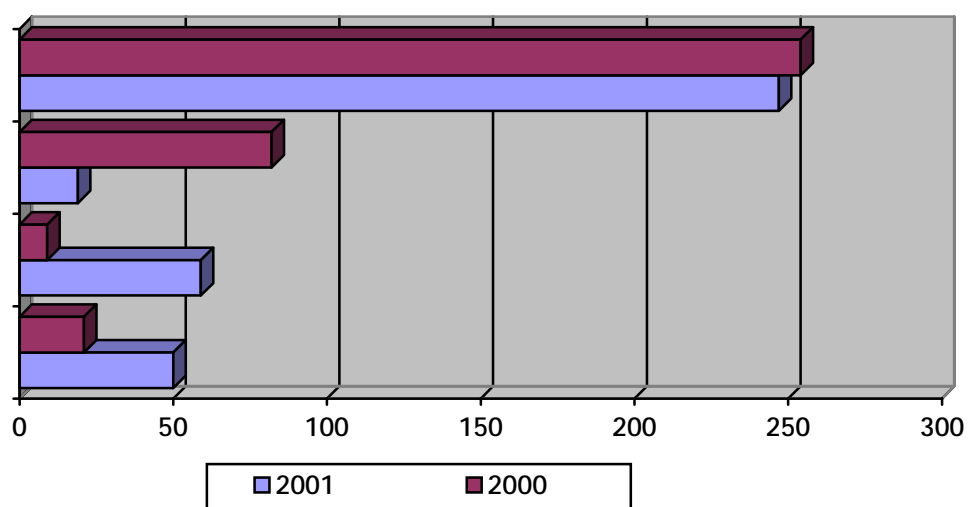
%20

:

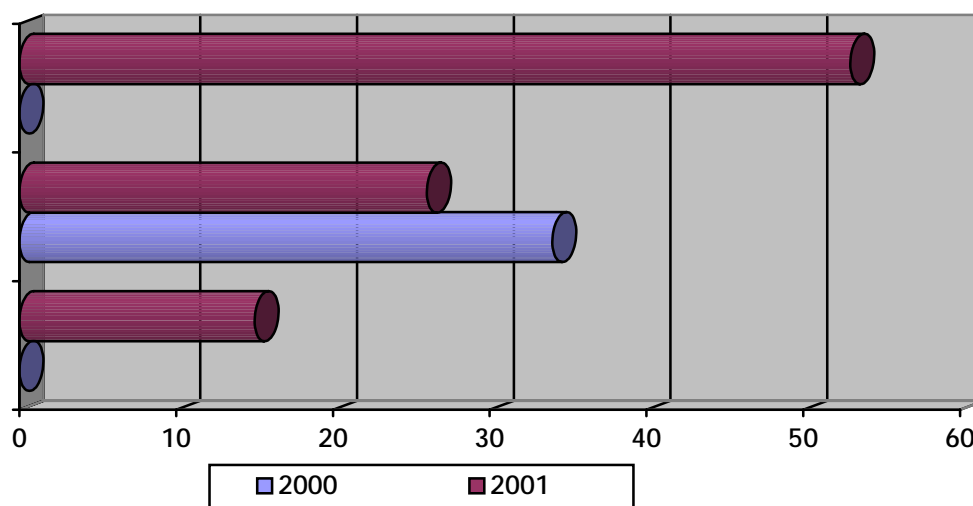
•

•

366	21	9	82	254	2000
375	50	59	19	247	2001

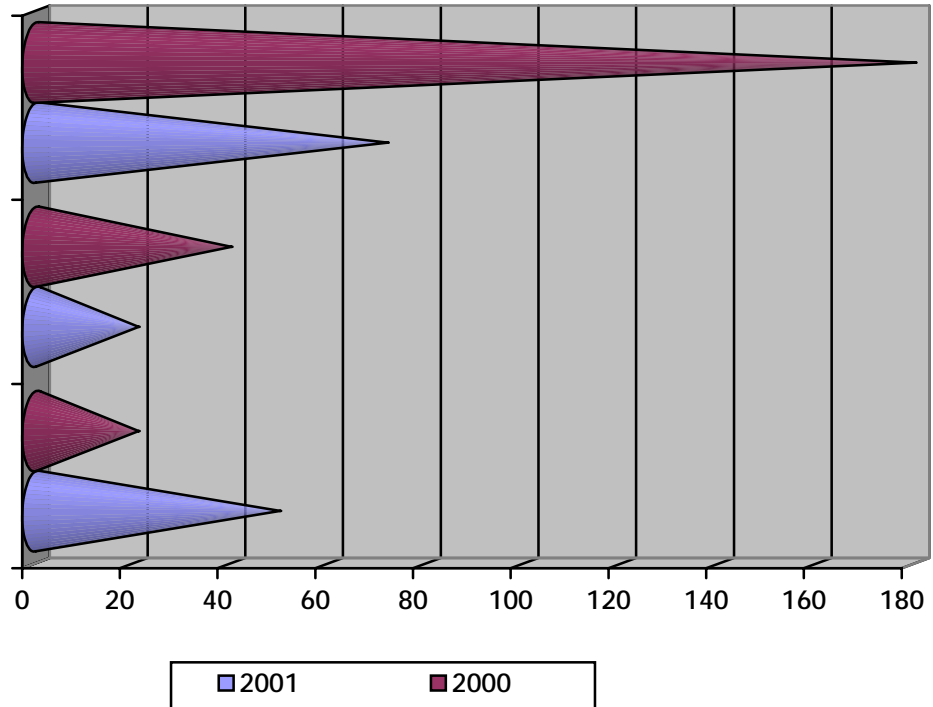


				2000
34	0	34	0	
94	15	26	53	2001

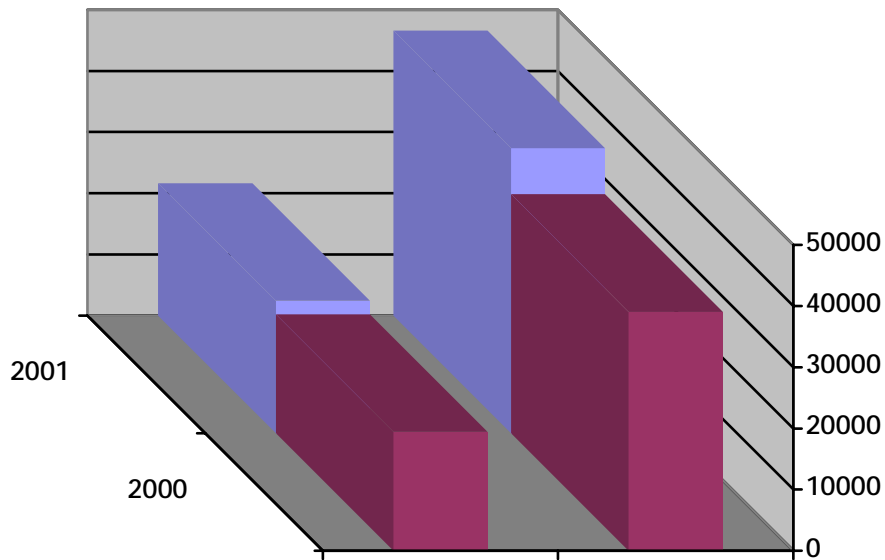


2000

2000		
21	72	2000
40	180	2001

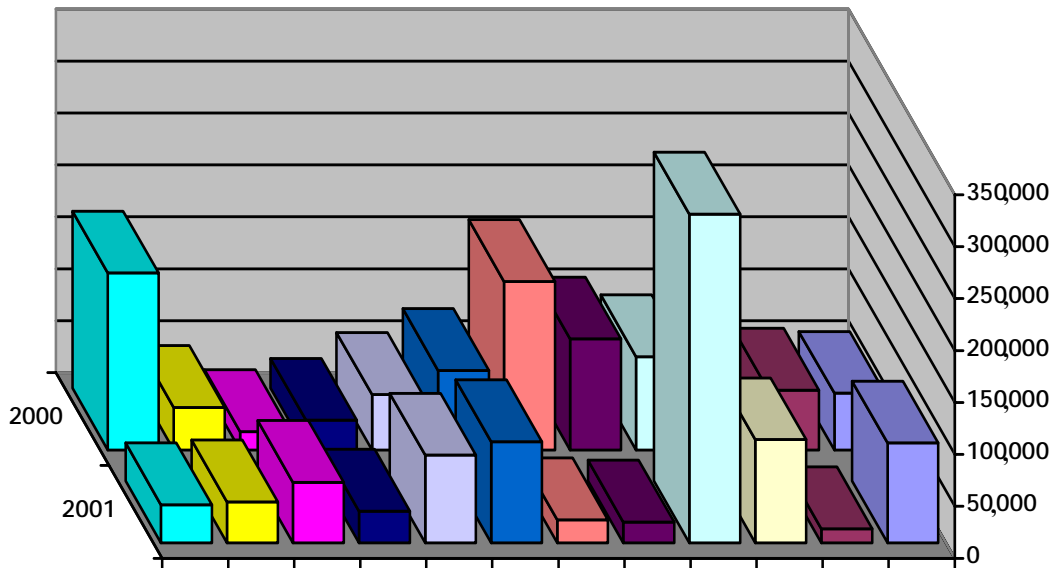


2001			2000			
6560	4367	2193	4525	2915	1610	
5586	3710	1876	4926	3059	1867	
5064	3600	1464	4103	2709	1394	
6029	3916	2113	5047	3296	1751	
5836	3805	2031	5622	3525	2097	
5581	3767	1814	4698	3091	1607	
6082	4178	1904	5423	3597	1826	
4955	3459	1496	4817	3382	1435	
5803	3990	1813	5195	3596	1599	
5710	3849	1861	5439	3873	1566	
5748	4171	1577	5002	3390	1612	
5287	3797	1490	3684	2618	1066	
68241	46609	21632	58481	39051	19430	

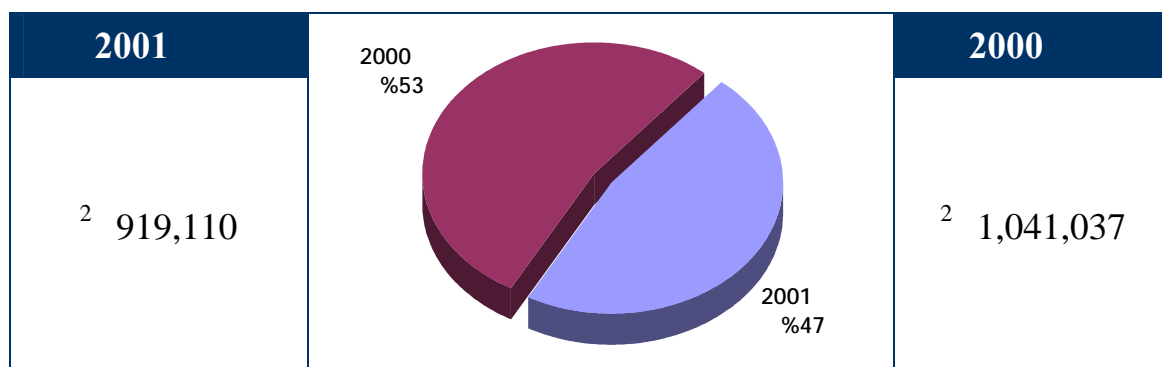
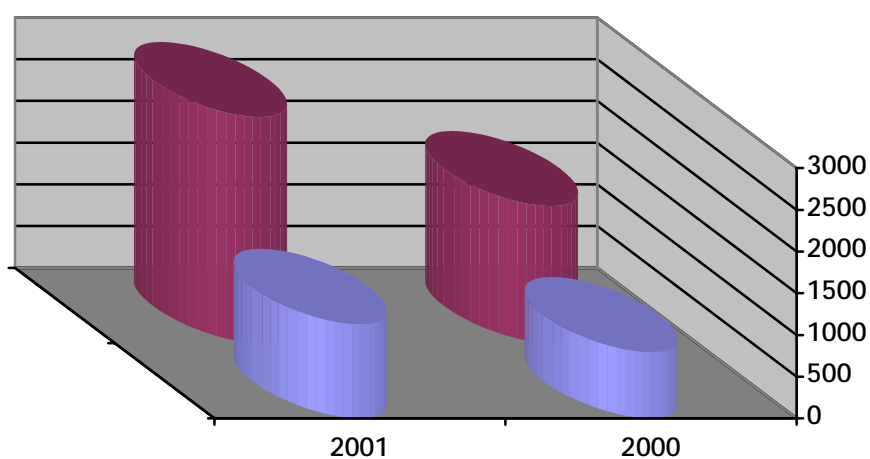


()

2001	2000	
96143	54636	
13430	57517	
99256	44742	
316434	89930	
20198	106979	
22093	162167	
97299	76569	
84310	53371	
30458	28678	
58314	17856	
39530	40913	
36690	170351	
914155	903709	



2001	2000	
1131	794	
2707	1642	



()

2001			2000			
2325	2113	916.8	1950	1543	514.0	
790	1200	371.1	420	1109	370.0	
270	1111	488.2	315	1157	386.0	
0	252	839.0	183	145	48.0	
0	799	268.2	292	386	129.0	
3385	5475	2883.3	3160	4340	1447	

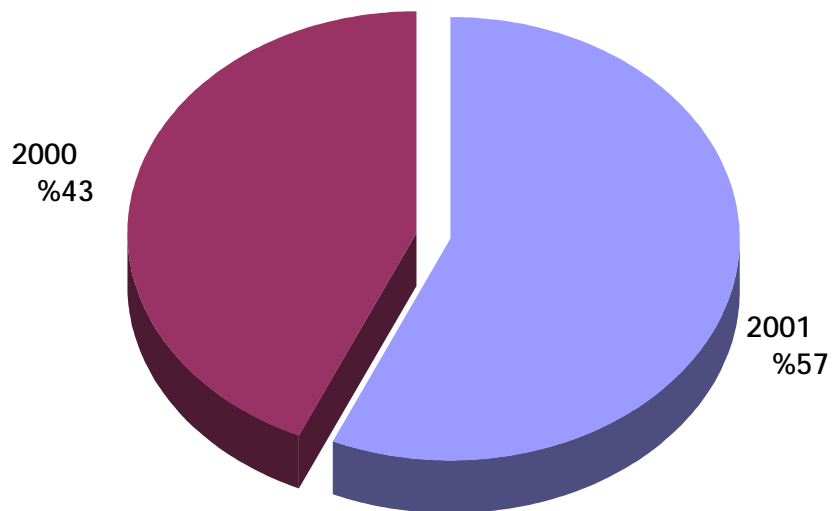
(100)

()

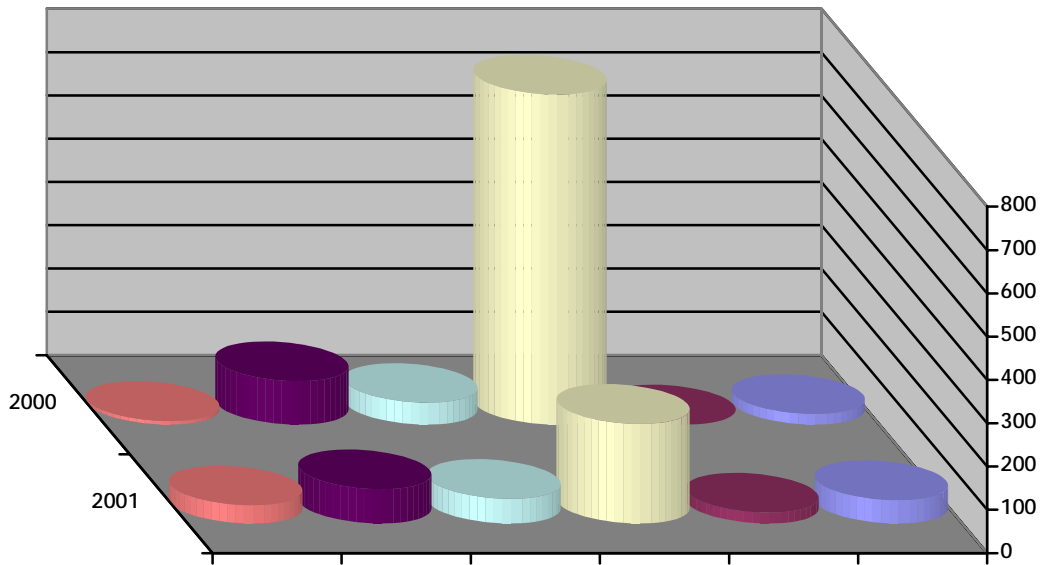
2001 2000

%14

2001	2000	
/ ³ 97500	/ ³ 74500	

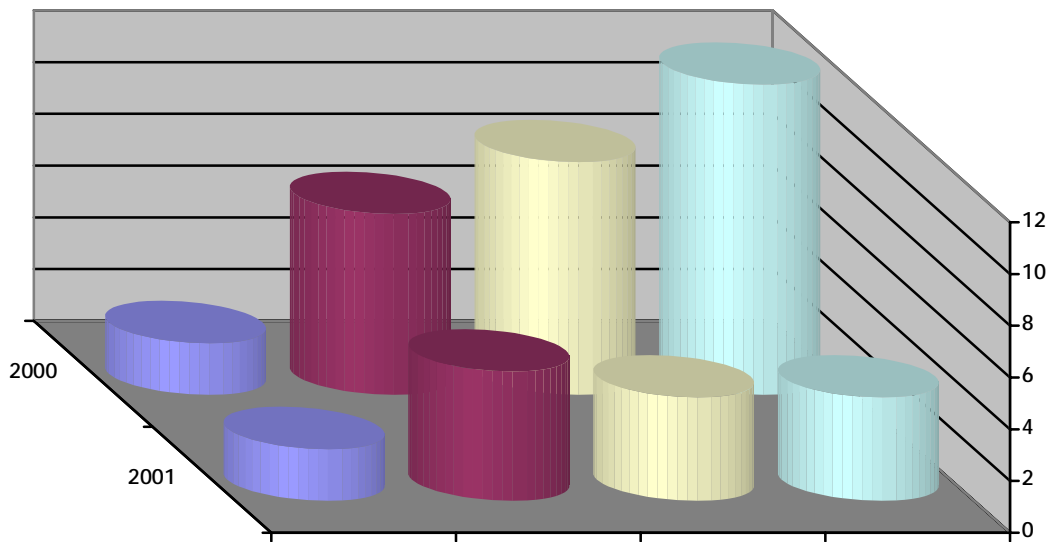


2001	2000	
54	24	
25	0	
230	762	
57	50	
79	100	
42	8	

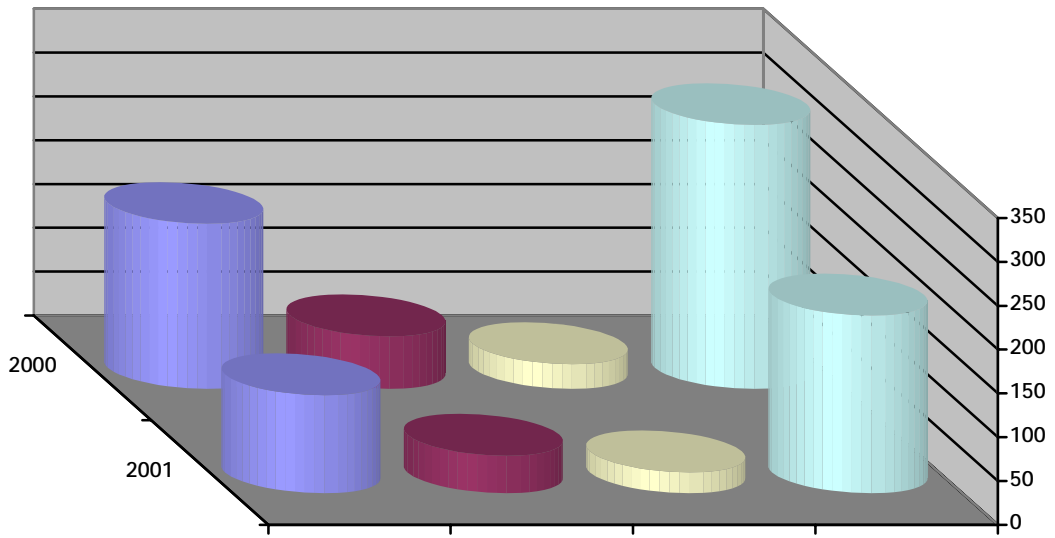


%60

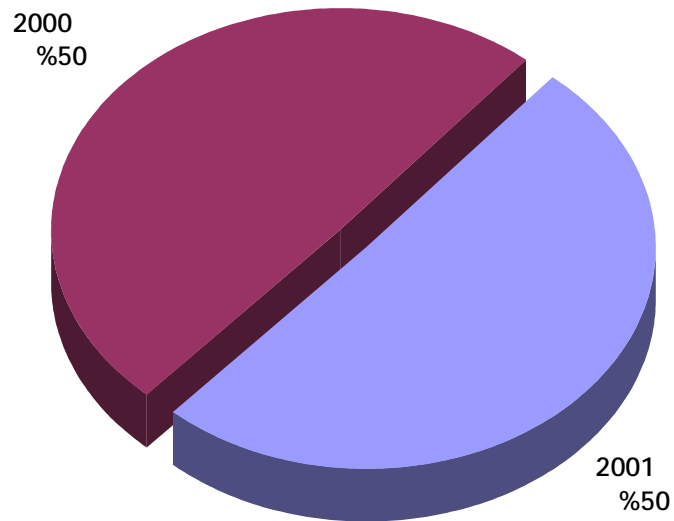
2001		2000		
5	1/	7	4/ 1/	
2	4/	2		
4		9		
4	3	12	3 60 4	



2001		2000		
7,096	112	11,334	188	
2,842	43	4,021	60	
1,639	24	1,346	28	
-	203	-	301	

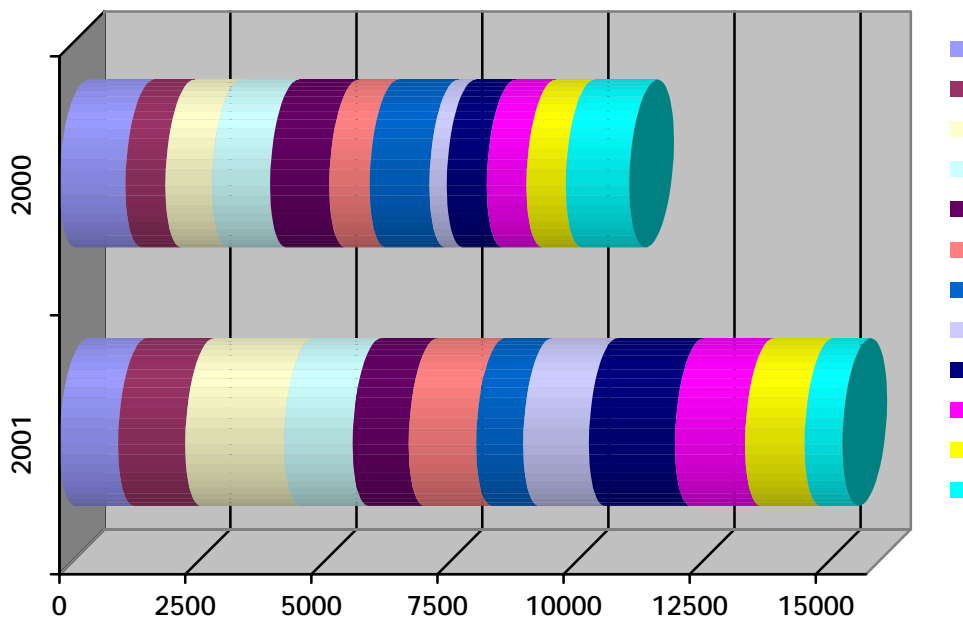


2001	2000	
31784	31251	



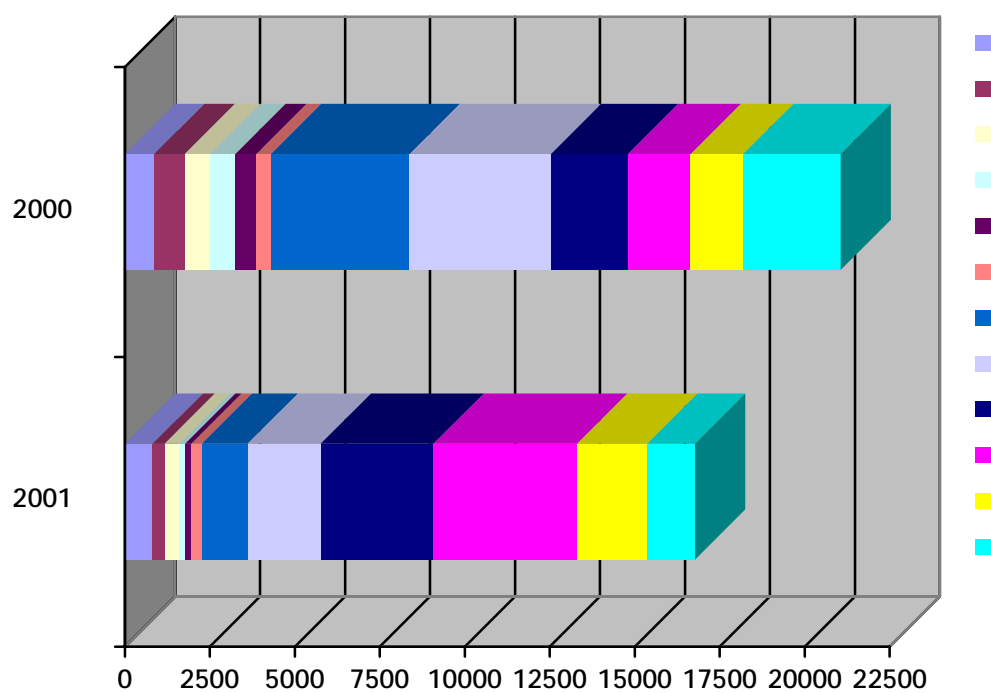
()

2001	2000	
1164	1307	
1334	794	
1964	927	
1356	1149	
1112	1180	
1336	796	
935	1188	
1299	343	
1711	791	
1386	792	
1186	780	
745	1255	
15528	11302	



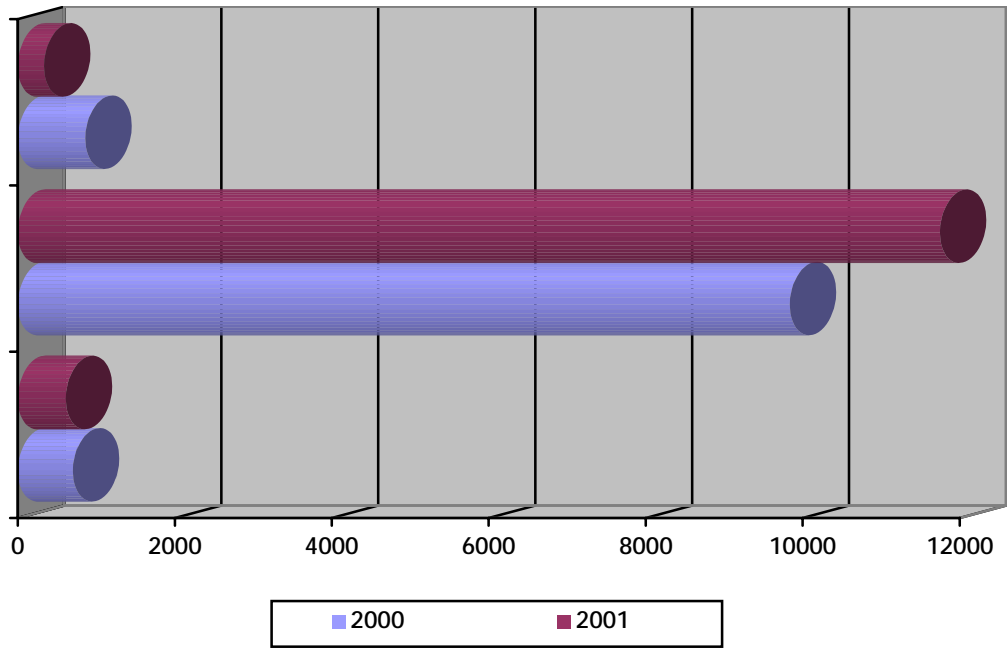
()

2001	2000	
819	860	
349	904	
438	756	
165	730	
188	620	
308	425	
1347	4089	
2147	4153	
3324	2264	
4226	1846	
2062	1541	
1396	2870	
16769	21058	



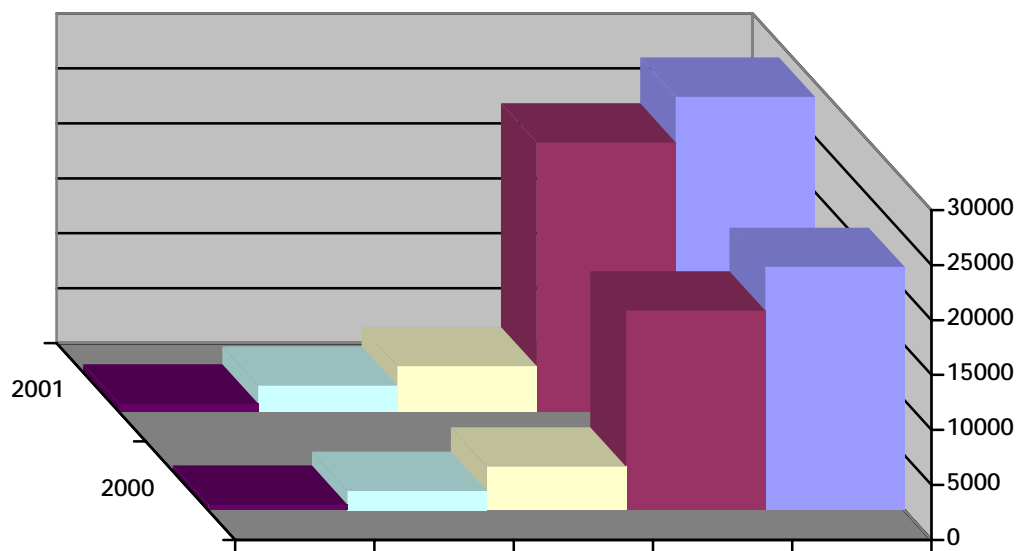
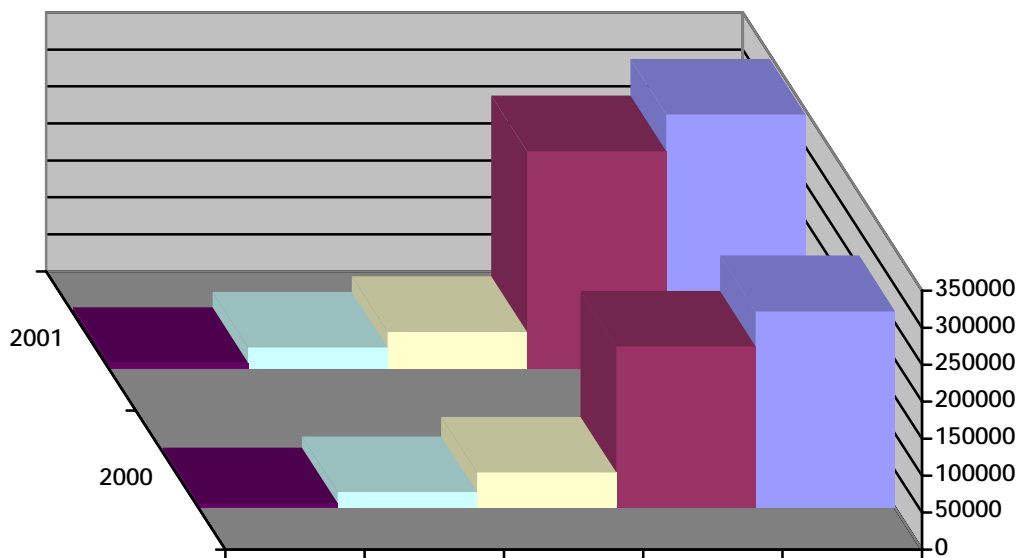
()

2001	2000	
333	858	
11747	9835	
610	700	
15528	111393	

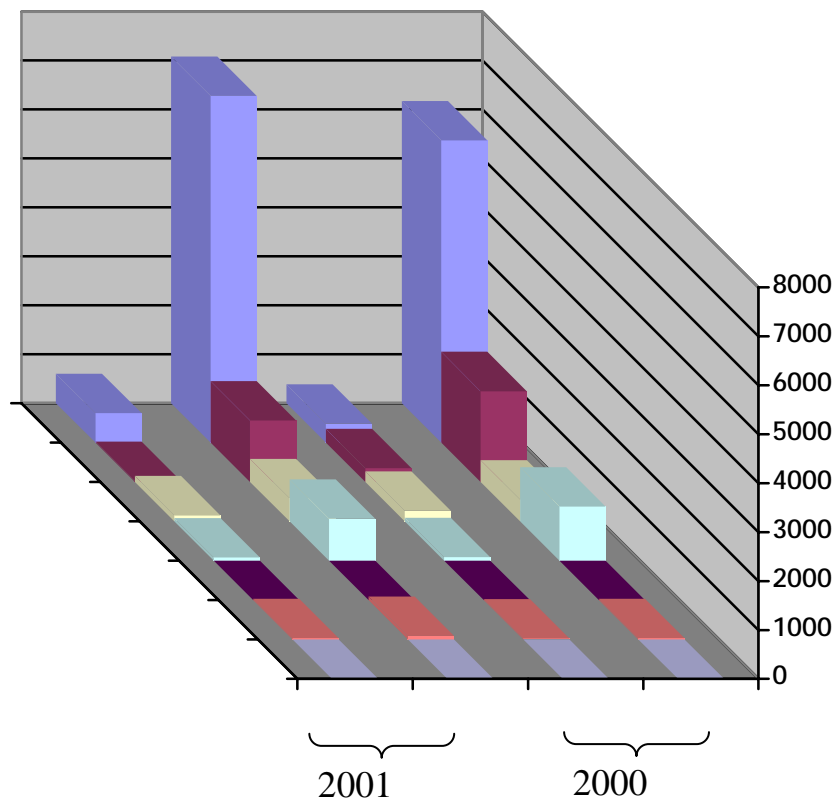


()

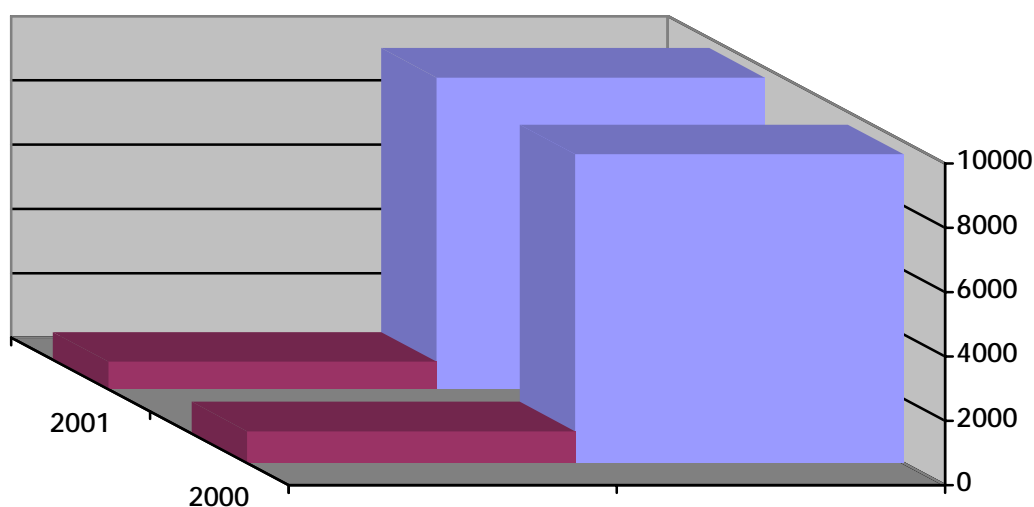
21139	6097	47605	218247	265852		2000
1762	508	3967	18187	22154		
28515	7904	49908	294107	344015		2001
2376	759	4159	24509	28668		



2001			2000			
103	26	77	51	25	26	(Complaint)
4	2	2	3	0	3	
7681	602	7079	6561	388	6173	
1280	23	1257	2137	283	1854	
926	68	858	1180	74	1106	
597	122	475	661	218	443	
5	0	5	0	0	0	
10596	843	9753	10593	988	9605	

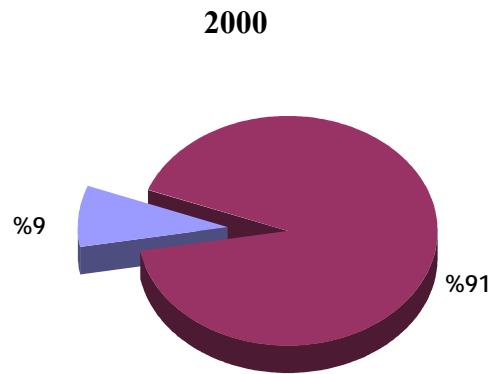
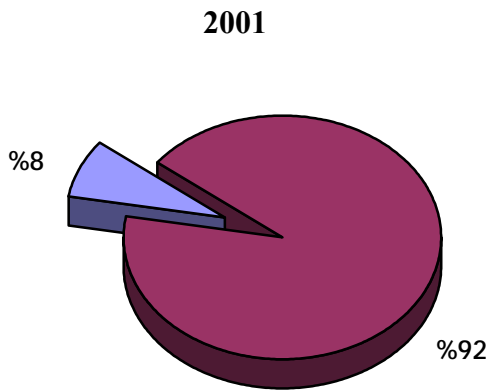
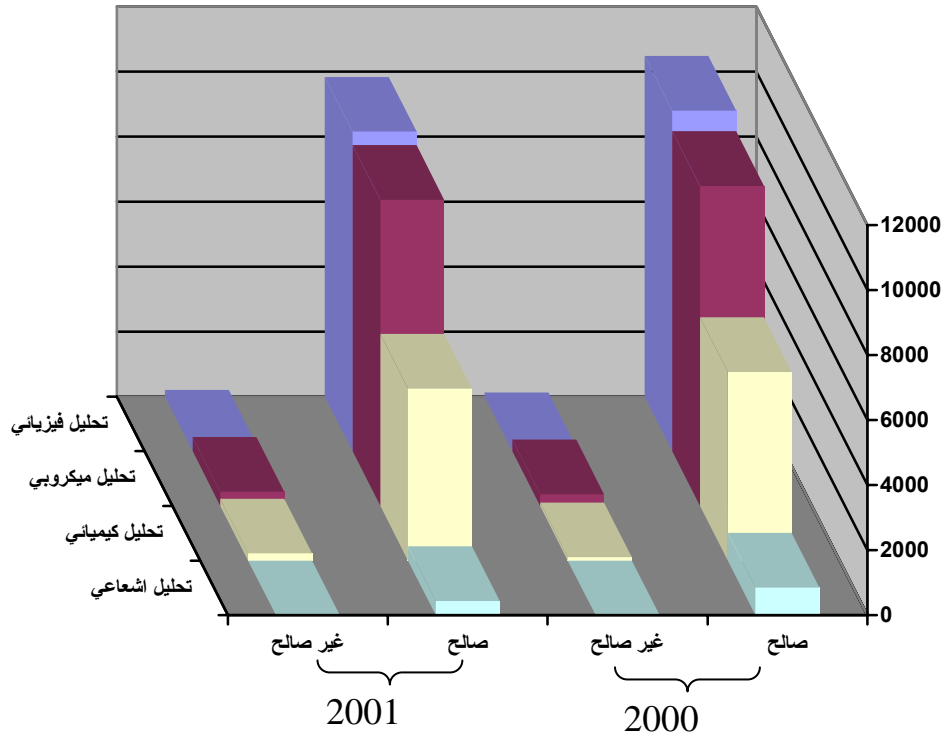


2001			2000			
1637	65	1572	1597	57	1540	
380	22	358	376	51	325	
101	18	83	157	53	104	
223	14	209	282	72	210	
305	20	285	429	27	402	
146	17	129	126	1	125	
68	19	49	75	35	40	()
201	8	193	247	27	220	
4523	122	4401	4736	155	4581	
211	22	189	131	8	123	
318	19	299	196	51	145	
310	36	274	345	36	309	
206	88	118	141	39	102	
132	5	127	116	39	77	
170	9	161	202	76	126	()
1623	358	1265	1407	239	1168	
42	1	41	30	22	8	
10596	843	9753	10593	988	9605	



2001			2000			
10032	200	9832	10599	122	10477	
9855	433	9422	10201	355	9846	
5511	221	5290	5902	103	5799	
438	0	438	854	0	854	
25836	854	24982	27556	580	26976	

2001			2000			
1048	76	972	220	23	197	
2152	101	2051	4494	185	4309	
5470	307	5163	4647	433	4214	
1040	97	943	492	98	394	
196	56	140	97	17	80	
103	57	46	18	16	2	
88	33	55	222	74	148	
24	2	22	15	5	10	
424	101	323	94	25	69	()
10545	830	9715	10299	876	9423	



:

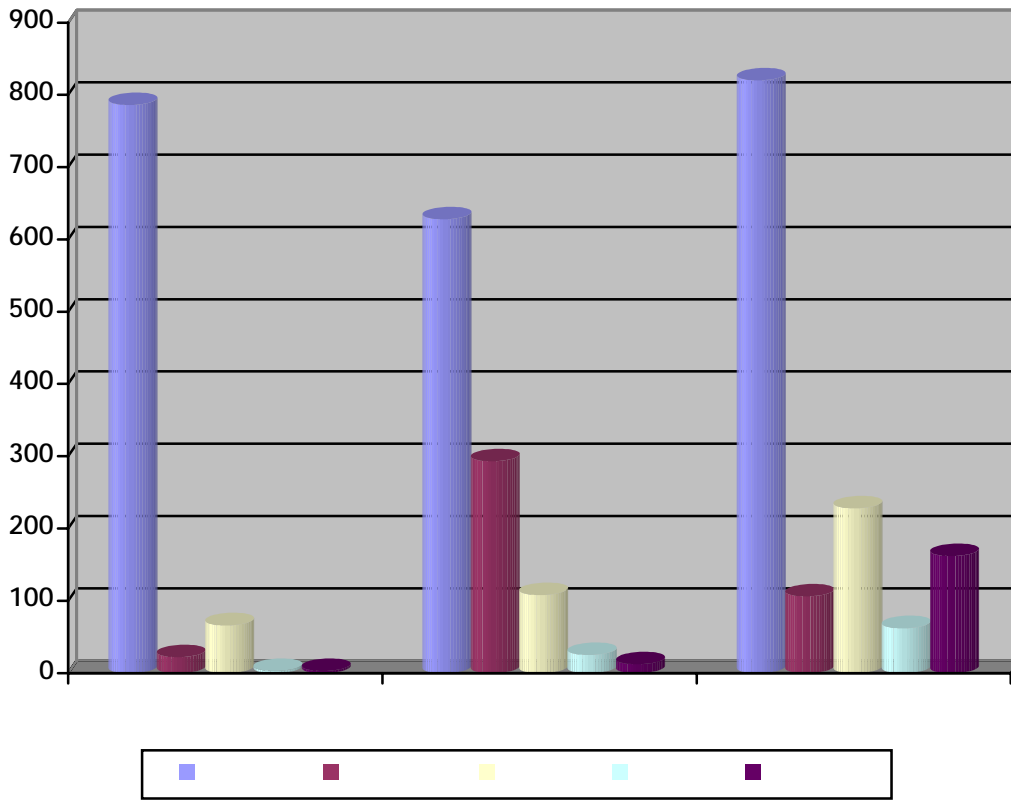
1993

1996 () .(

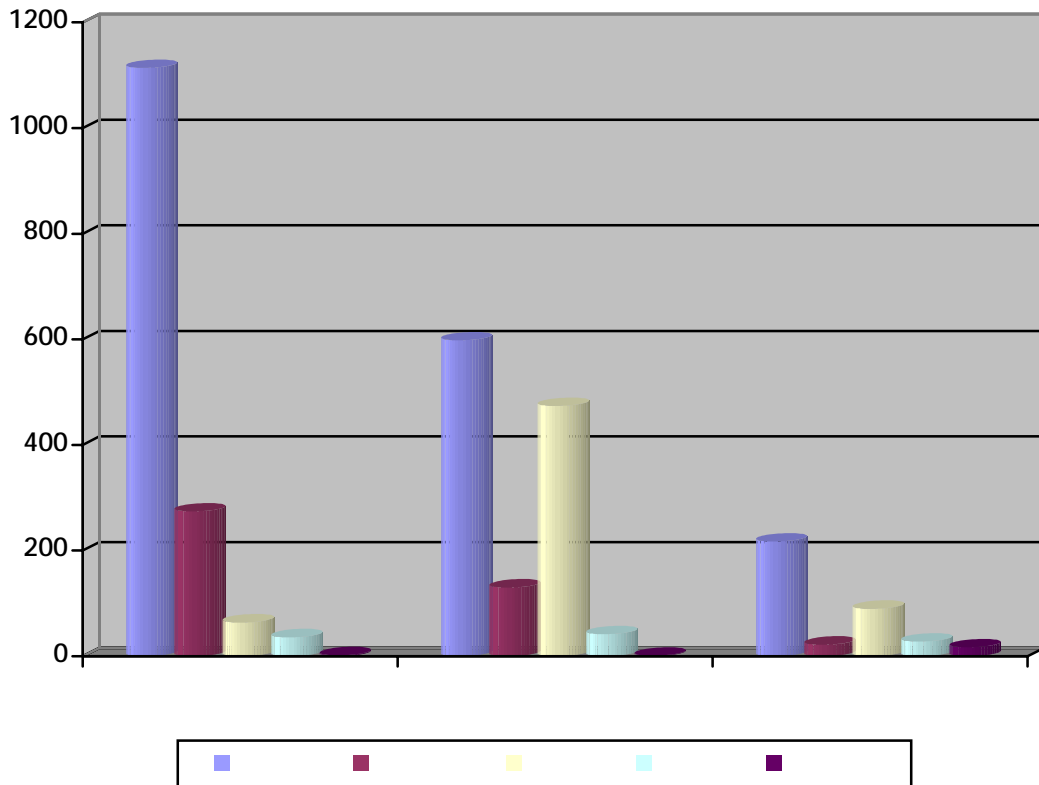
2000

2234	786	628	820		2000
421	22	293	106		
402	66	108	228		
90	3	25	62		
277	3	12	162		
3324	880	1066	1378		
1929	1114	598	217		2001
426	274	130	22		
628	64	474	90		
106	36	42	28		
20	2	1	17		
3109	1490	1245	374		

2000



2001



1. _____ :

2001	2000	
7734	6592	
8	13	
7742	6605	

2. _____ :

2001	2000	
26939	25102	
10590	8490	
37529	33592	

2000

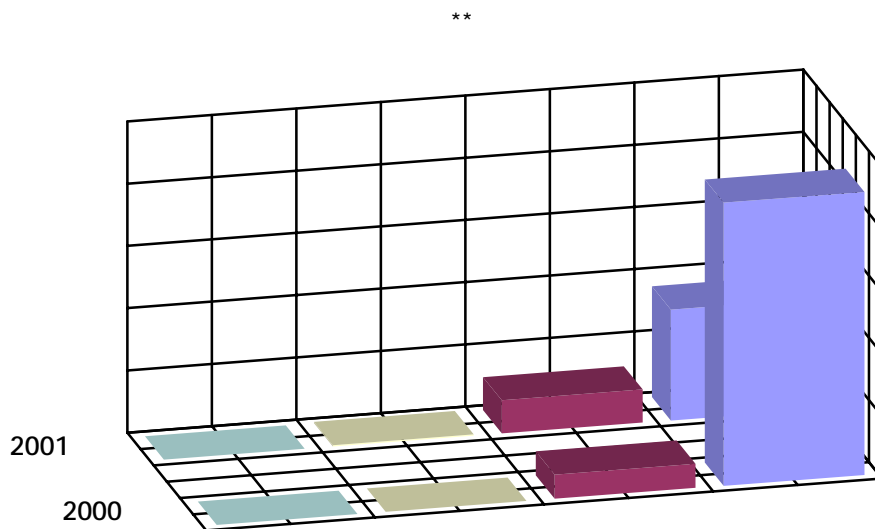
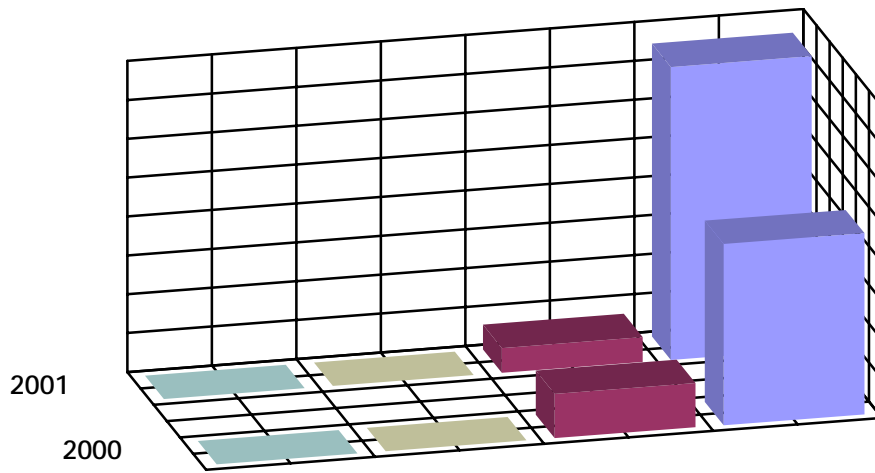
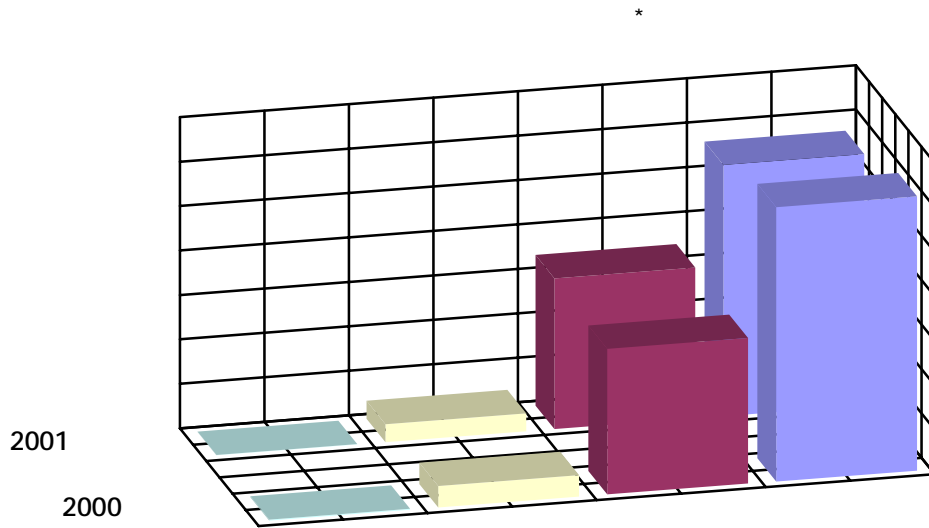
**		**		*	
61724		455	466	61724	
6240					
32760		39	114	32760	
566					
0		0	0	4819	
96					
0		0	0	178	
0					

2001

**		**		*	
56551		178	753	56551	
1781					
33926		53	64	33926	
1942					
0		2	0	4067	
259					
0		0	0	42	
0					

*

**

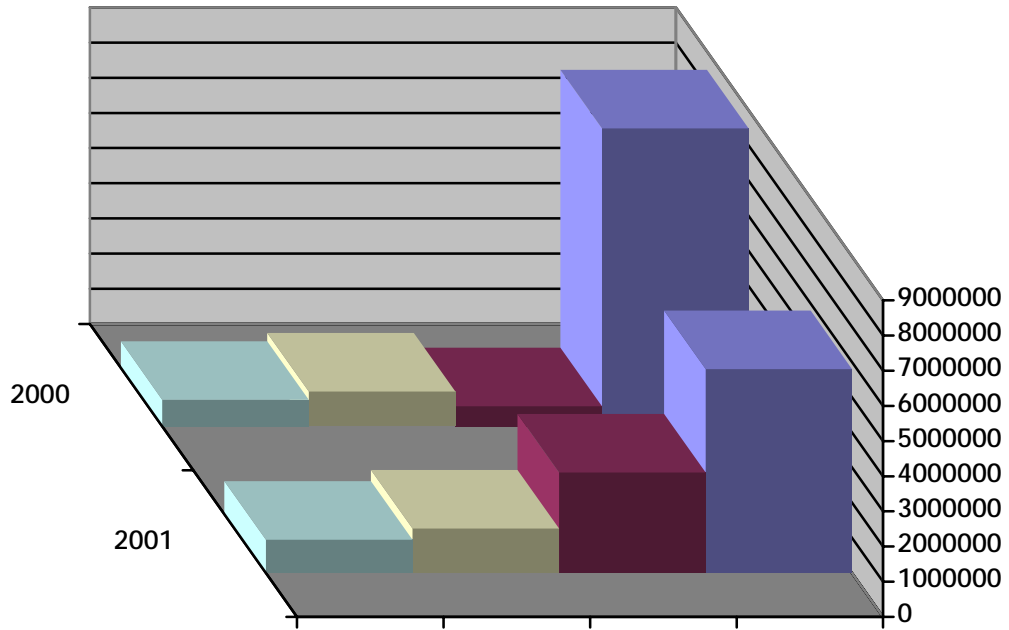


.4 _____ :

() 2001 2000

2001	2000	
5797736	8473504	
2852479	579172	
1264605	990376	
943831	758050	

2001 2000

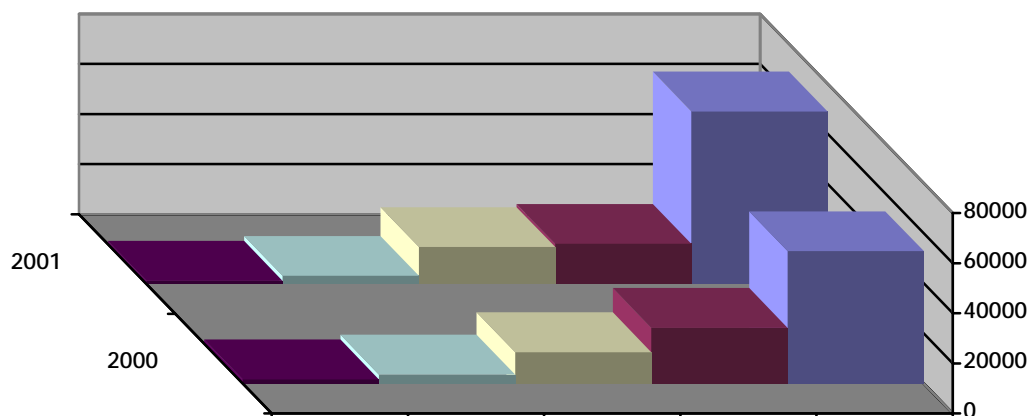


.5 _____ :

()

356020	12520	52892	3597	22257	1632	2000
--------	-------	-------	------	-------	------	-------------

489400	14704	68874	3241	16015	1246	2001
--------	-------	-------	------	-------	------	-------------

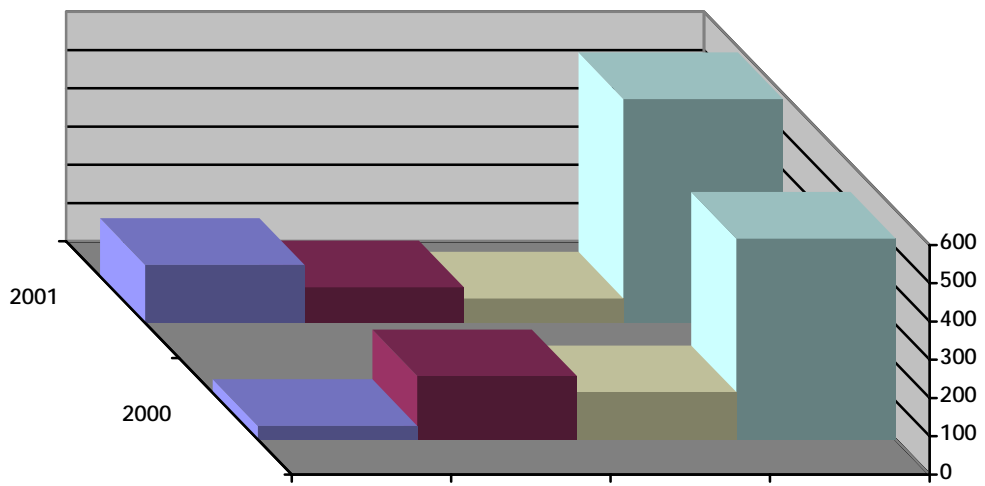


6. _____ :

()

2001	
152	
14	
93	
7	
475	
41	
64	
27	
21	

2000	
36	
49	
166	
90	
51	
49	
124	
88	
39	
159	



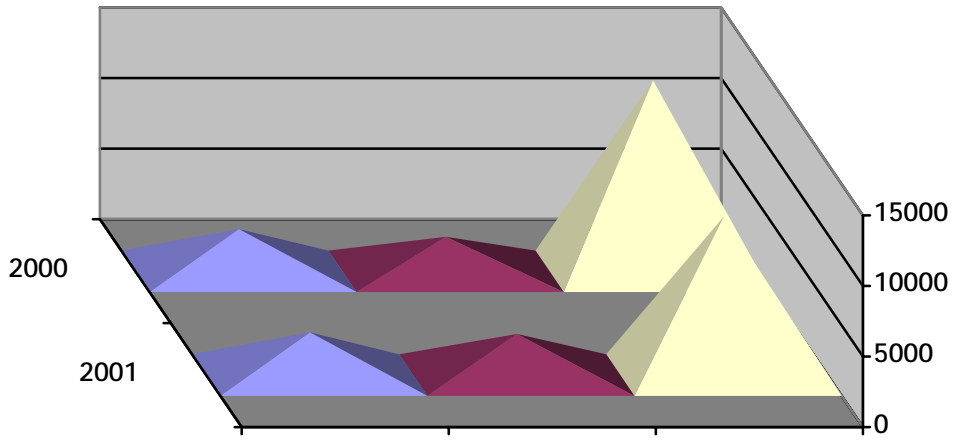
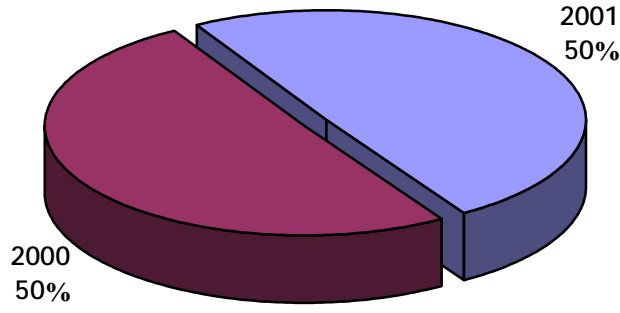
:

. ()

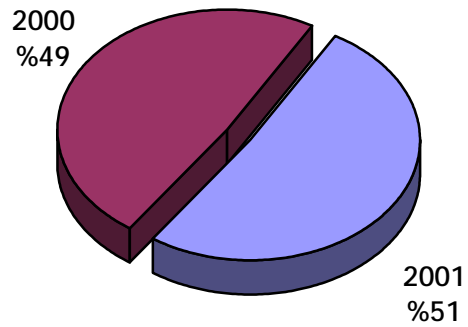
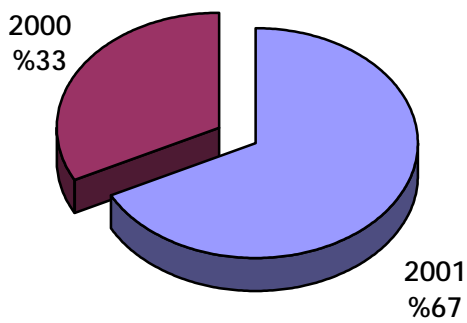
.1
.2
.3
.4
.5
.6
.7

2001	2000	
87757	89322	

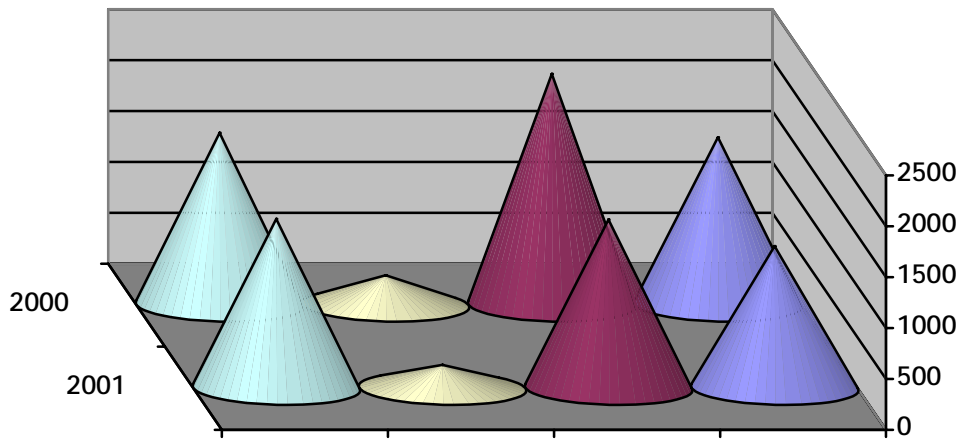
2001	2000	
3022	2976	
2914	2444	
11252	13530	



2001	2000	
261	126	
19474	18495	



2001	2000	
1396	1650	
1657	2275	
230	294	
1665	1694	



:

80

50

30

300

180

()

()

1981

1. _____ :

118

4800

16

1044

2. _____ :

58

3400

3. _____ :

11

3900 :_____ .4

5 20
1980 :_____ .5

4500
9 44

850

3200 :_____ .6

18 42

3600 :_____ .7

52

:_____ .8

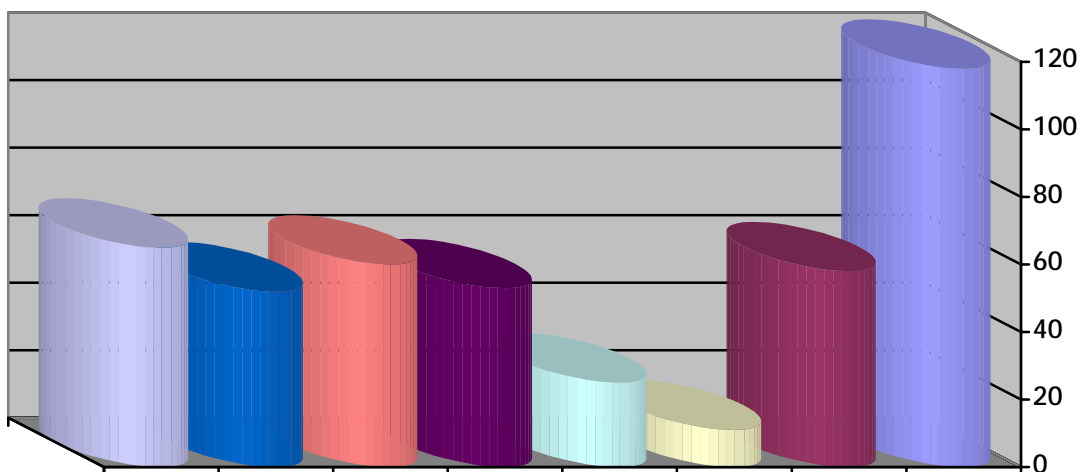
1979 735,105

150

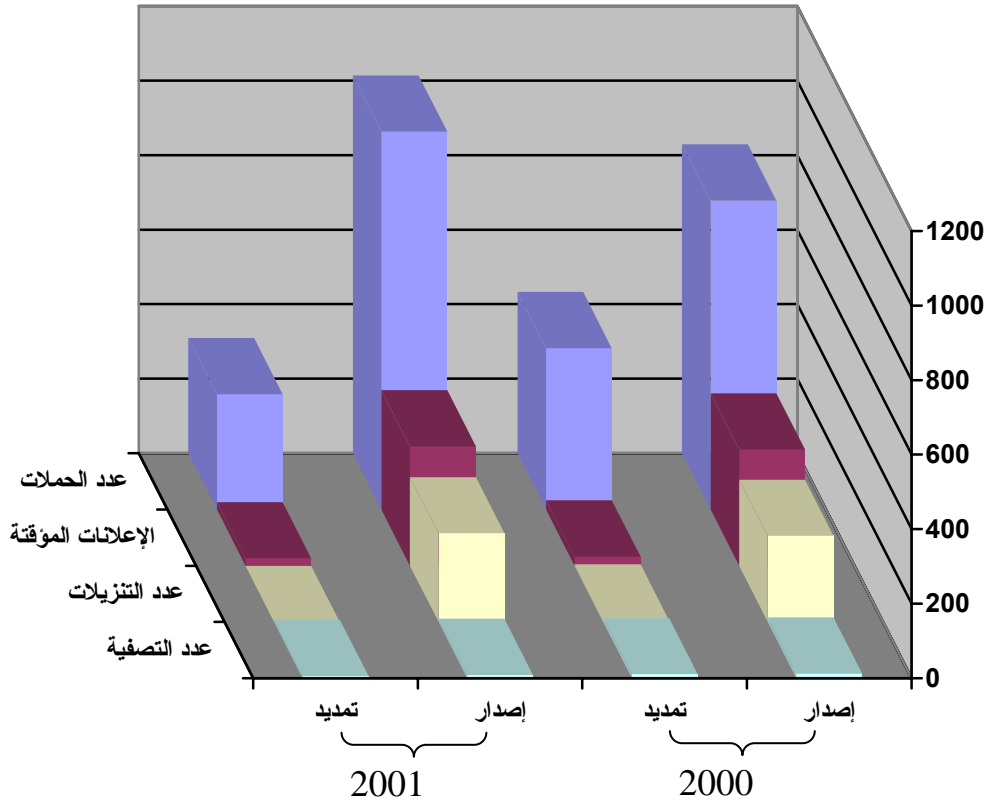
()

65 :_____ .9

118	
58	
11	
25	
53	
60	
52	
65	



2001		2000		
0	238	4	231	
6	9	11	12	
309	1014	433	829	
20	320	25	312	
335	1581	473	1384	

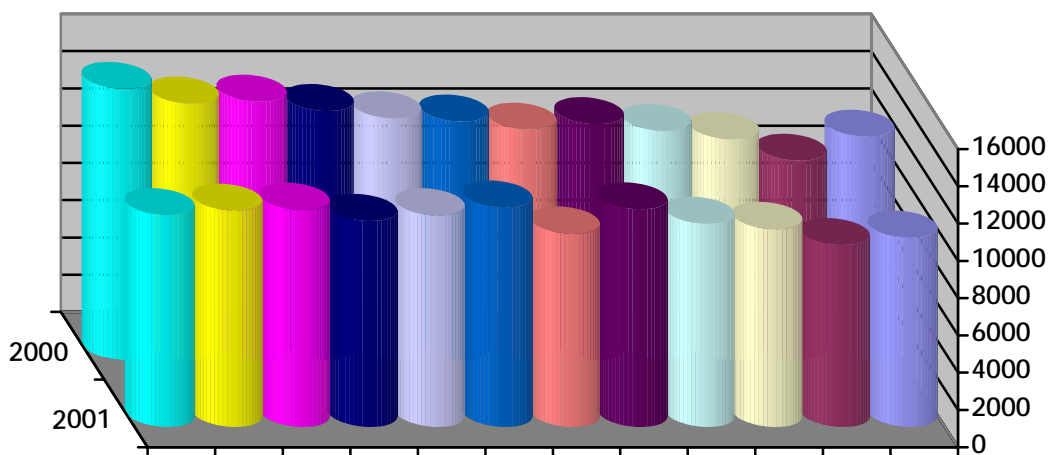
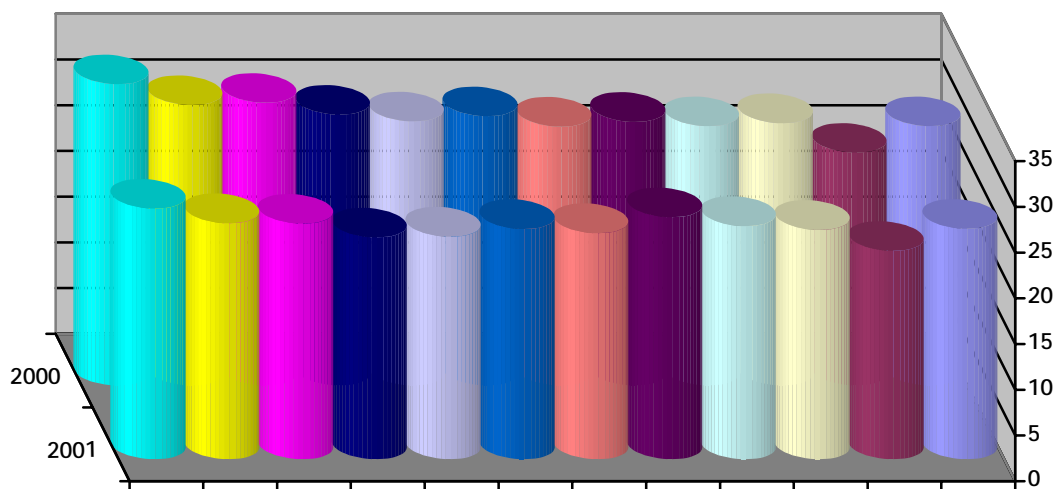


15

45

1. _____ :

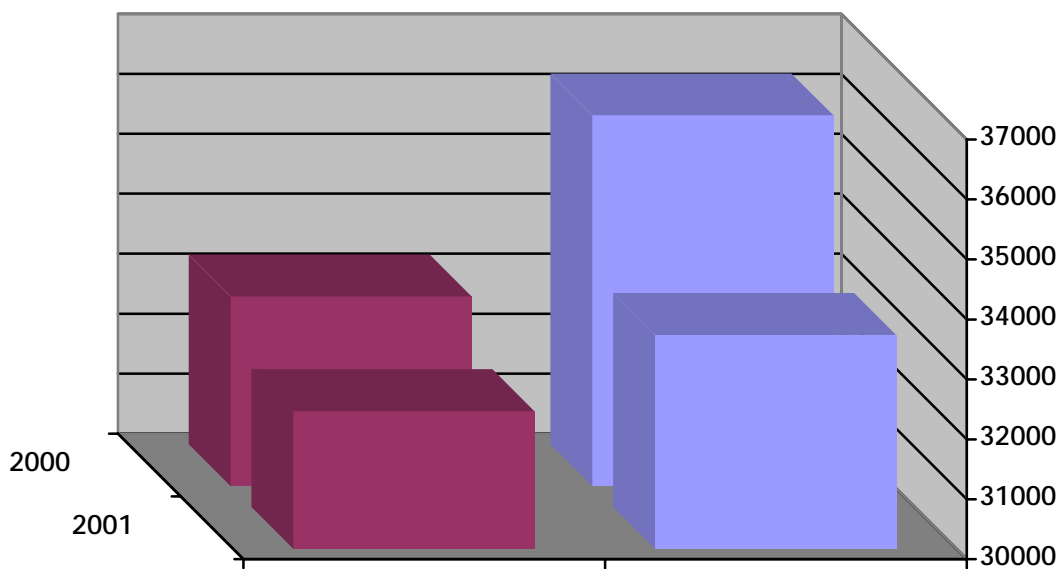
2001		2000		
11946	28.371	10161	25.210	
10658	25.470	9759	22.790	
11821	28.698	10616	25.084	
12262	28.371	10895	25.506	
12617	28.838	11676	26.451	
12323	28.316	10374	24.730	
12755	29.442	11775	25.186	
12926	28.880	11351	24.345	
13328	29.624	11054	24.258	
13824	30.914	11644	25.757	
13724	30.667	11603	25.814	
14513	32.952	11366	27.399	
152697	350.543	132274	302.530	



2. _____ :

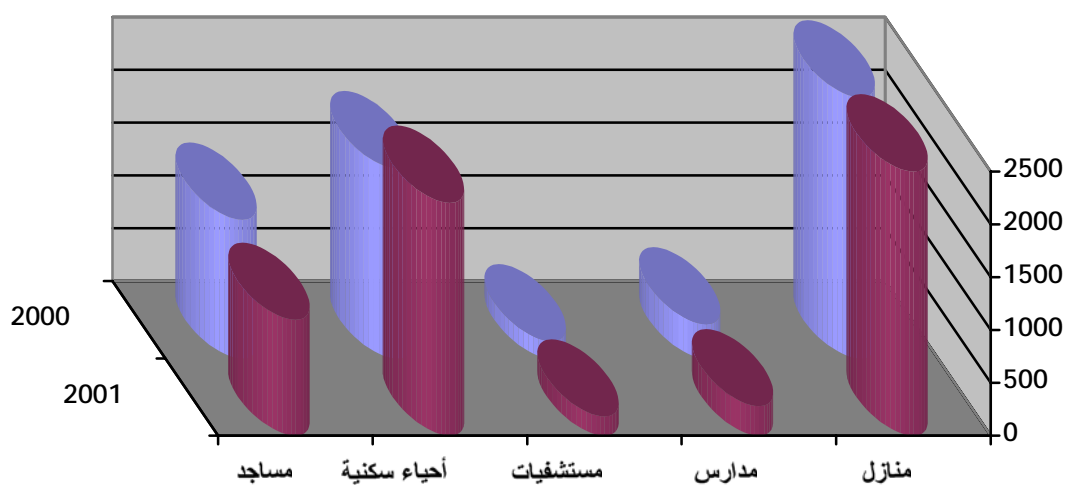
3. _____ :

78660	5419	2842	2577		2000
73900	5317	2702	2615		
74560	5384	2723	2661		
78380	5514	2864	2650		
75630	5832	2748	3084		
71840	5326	2638	2688		
68010	5514	2056	2950		
66280	5454	2500	2954		
72780	5739	2696	3043		
76990	5774	2864	2910		
82340	5933	3051	2882		
71520	5166	2612	2554		
890890	66372	32296	33568		
80100	5861	2983	2878		2001
75880	5839	2835	3004		
71010	5586	2647	2939		
73870	5789	2755	3034		
72610	5796	2721	3075		
69910	5558	2594	2964		
75340	5817	2846	2971		
66660	5539	2494	3045		
70220	5779	2637	3142		
77260	5919	2880	3039		
77260	5919	2880	3039		
77560	5939	2888	3051		
887680	69341	33160	36181		

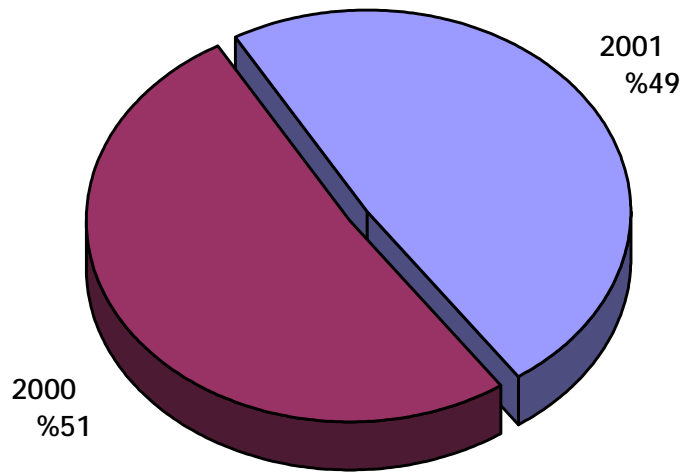


4. _____ :

95779	1311	1799	163	323	2469	2000
68464	1096	2203	182	279	2500	2001



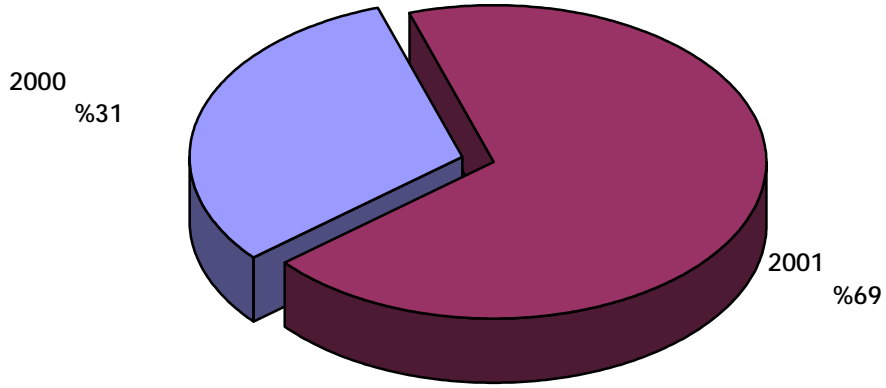
2001	2000	
28968	34623	
248794	255396	
4021	5956	
879	891	
5171	7935	
287833	304801	



47125	184972	30461	2000
47483	285861	89210	2001
94608	470833	119671	

2487	33	84352	2000
3226	18	88421	2001

2001	2000	
149	109	
738	864	
12	10	
34	3	
2439	777	
7313	3090	
10685	4853	

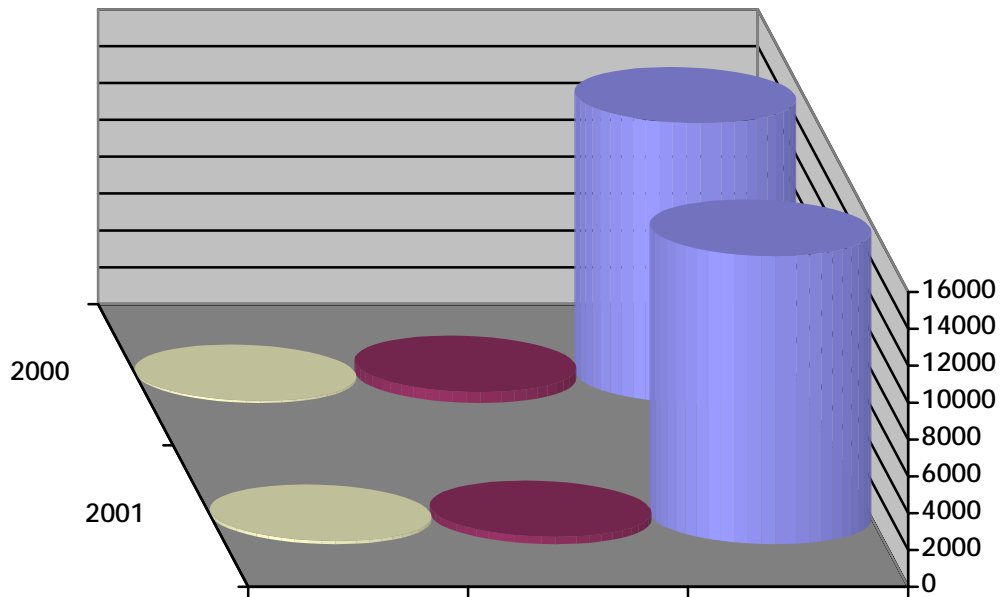


2001	2000	
1605	875	
9	5	
144	49	
93	93	
575	0	

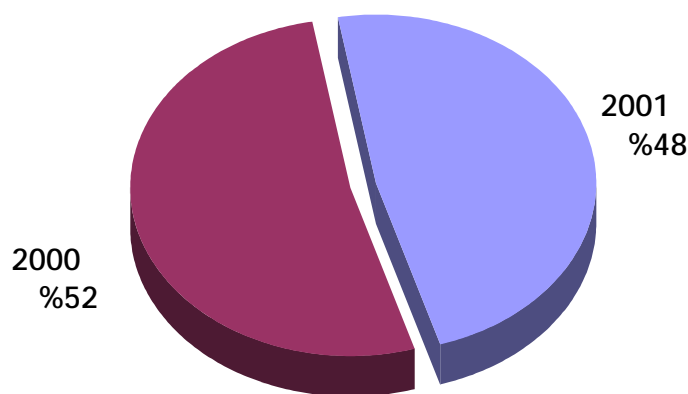
_____ : : _____

2001	2000	
4374	4601	
850	390	
72	46	()
15	7	

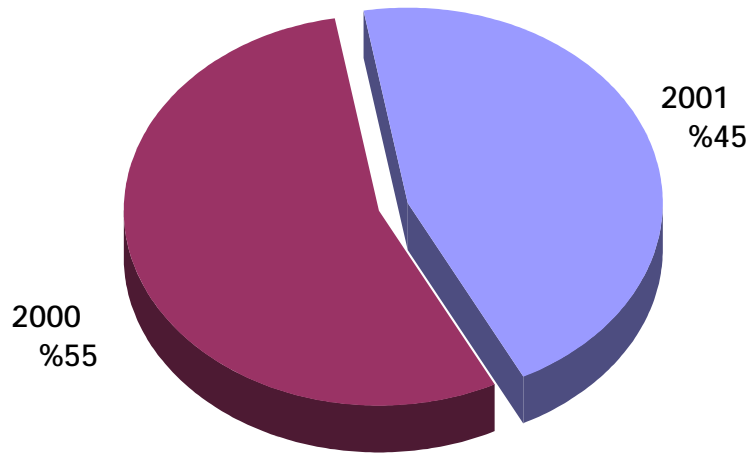
2001	2000	
15654	15181	
403	594	
184	112	



2001		2000		
%77	75	%73	65	
%81	80	%85	85	
%78	29	%79	41	
%100	145	%100	190	
%100	88	%100	95	
%91	166	%95	236	
%91	88	%85	74	
%91	273	%88	212	
%67	30	%86	120	
%90	19	%100	12	
%90	171	%88	127	

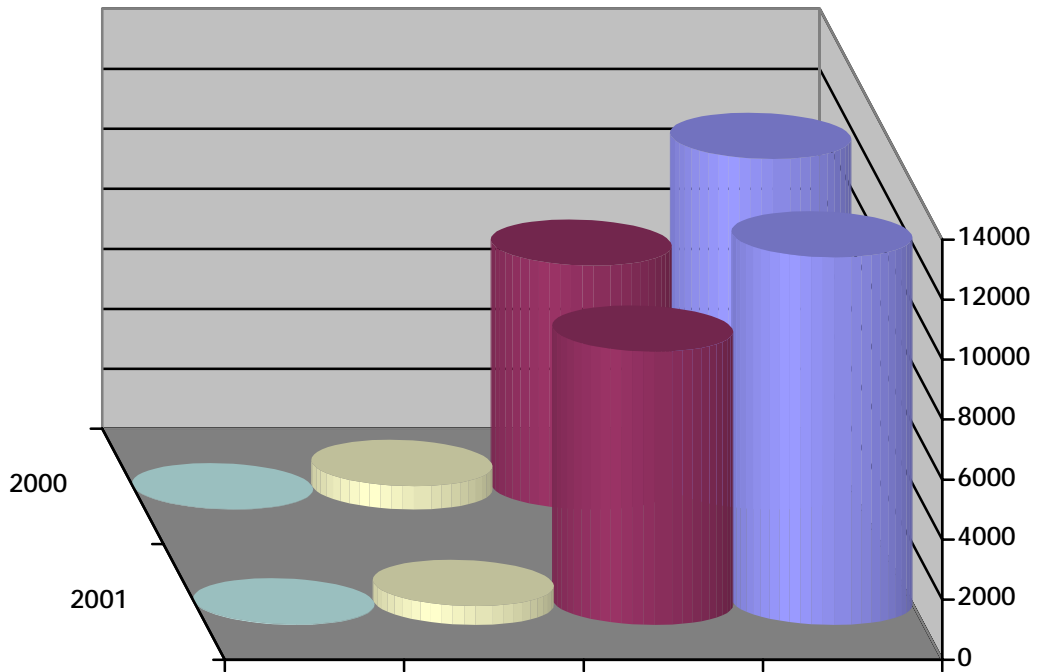


2001		2000		
%100	10	%100	10	
%100	20	%100	23	
%100	12	%100	14	
%100	71	%100	102	
%100	17	%100	28	
%100	21	%100	27	
%100	23	%100	32	
%100	37	%100	38	
%100	23	%100	10	
%100	2	%100	1	



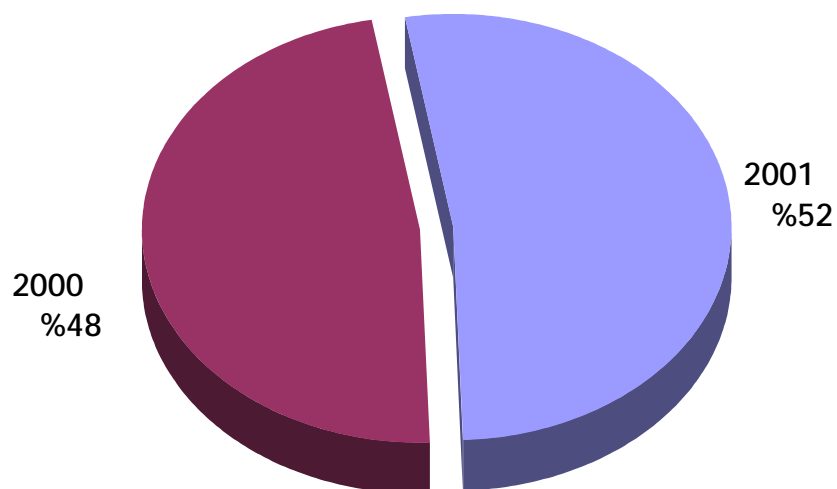
2001	2000	
4407	4337	
4008.8	4193.68	()
145321	18279.2	()
2188.2	1944.42	()
508	566	
135	117	
1	4	
21	30	
353	320	
480	534	
110	111	
0	0	
20	5	
0	0	
51	39	
90	0	

2001	2000	
12258	11692	
9114	8129	
634	789	
31	17	



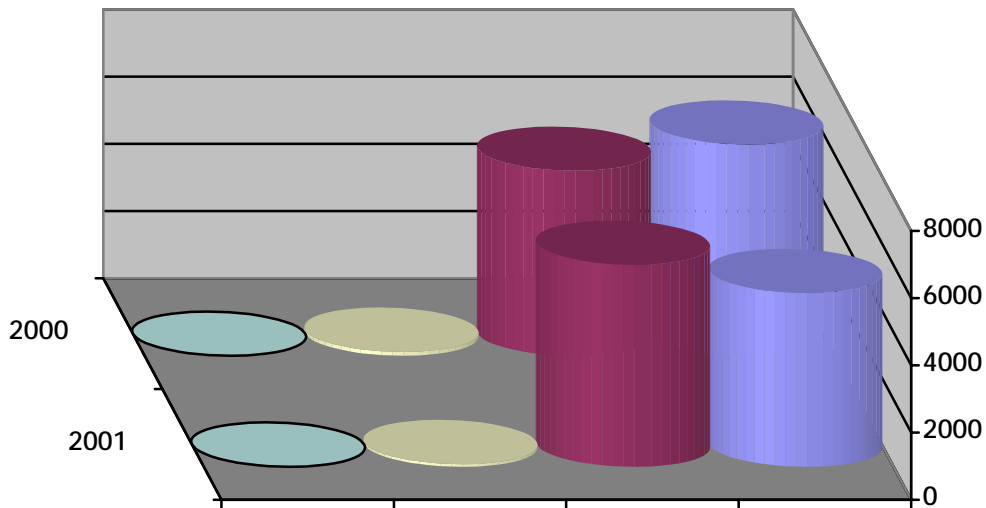
	()	()	
0	0	50	2000
0	0	8	2001

2001	2000	
14	7	.1
53	59	.2
12	7	.3
32	9	.4
4	2	.5
59	25	.6
125	117	.7
24	27	.8
155	197	.9
12	9	.10
115	85	.11
187	191	.12
121	146	.13
256	137	.14
129	169	.15
1298	1187	

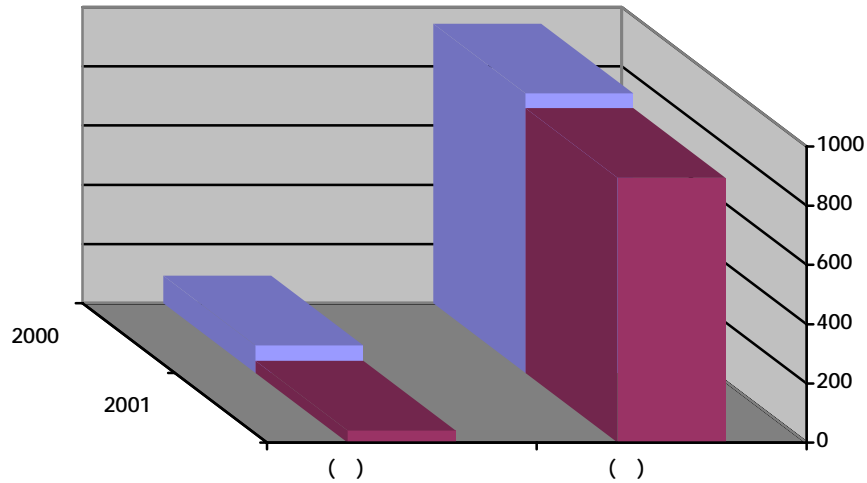


2001	2000	
5081	7086	
7420.9	4357.45	()
12311	16879.6	()
1932.7	1915.1	()
807	1643	
206	308	
0	5	
35	40	
385	468	
598	947	
135	240	
2	3	
18	19	
18	20	
23	13	
13	20	

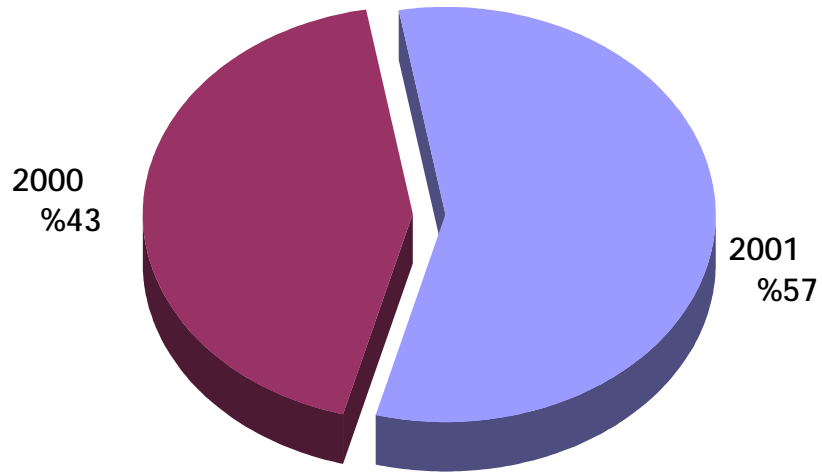
2001	2000	
5165	6285	
6001	5501	
77	118	
0	0	



	()	()	
37	93	944	2000
2	41.5	894	2001



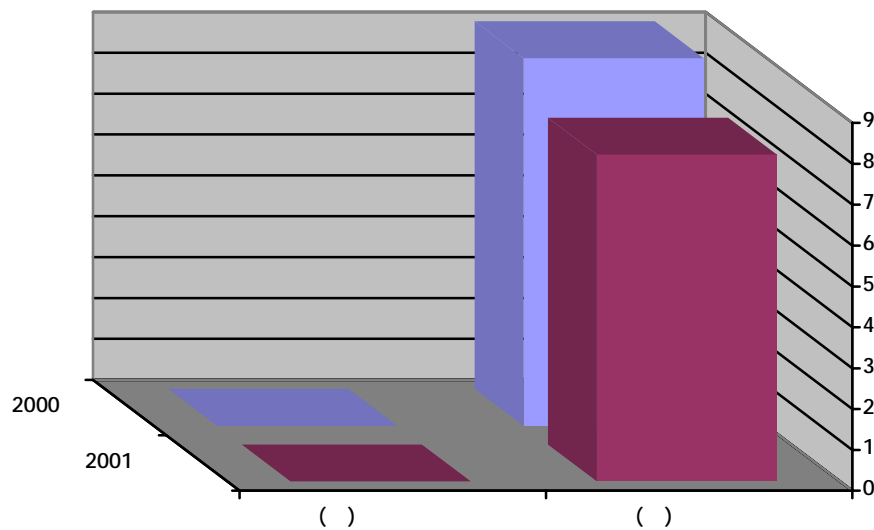
2001	2000		
24	25		.1
96	124		.2
149	132		.3
316	342		.4
3	0		.5
12	3		.6
169	205		.7
23	4		.8
1107	512		.9
38	72		.10
77	0		.11
21	0		.12
36	62		.13
46	4		.14
74	85		.15
11	13		.16
22	5		.17
215	261		.18
94	72		.19
24	20		.20
2557	1941		



_____ :

2001	2000	
1988	1895	
249.4	1022	()
4408.3	583	()
290.7	531	()
459	559	
156	133	
4	5	
10	7	
143	128	
201	258	
58	75	
2	0	
8	8	
6	0	

	()	()	
0	0	9	2000
0	0	8	2001



ملفات